

Skyline Advanced Peak Picking Models

Skyline now supports the ability to create custom advanced peak picking and scoring models for both selected reaction monitoring (SRM) and data-independent acquisition (DIA). This new feature aims to improve the accuracy and confidence of identifications in SRM-acquired data, and to enable large-scale automated processing of DIA datasets. This functionality can be applied to data collected on any instrument supported by Skyline (including QQQ, TOF and ion trap instruments from AB SCIEX, Agilent, Bruker, Thermo and Waters) provided the data was acquired through SRM, PRM or DIA.

When chromatograms are imported into a document, Skyline has traditionally chosen a best peak for each targeted peptide based on simple heuristics involving intensity, crude measures of co-elution, and the presence of matching isotopic standards. Over the last several years, however, sophisticated algorithms have been developed for more accurately choosing peaks in SRM data, and for quantifying the confidence that a peak corresponds to the targeted peptide. The mProphet algorithm¹ evaluates peaks based on a trained linear combination of scores related to co-elution, peak shape, ion intensity, spectral library relative product ion abundance correlation, predicted retention time, isotopic standards, and several other factors. More recently, OpenSWATH² (<http://proteomics.ethz.ch/openswath.html>) has added additional scores to aid in the analysis of DIA data, where peak selection is significantly more challenging due to the use of wide isolation windows, and where peptide identification confidence metrics will be required to analyze whole-proteome datasets.

Although Skyline continues to score peaks heuristically on initial import, it now allows the user to improve on what Skyline does by default by training and customizing scoring models based on mProphet and OpenSWATH.

In this tutorial, you will learn to train and customize a peak scoring model, as well as how to use the models to improve Skyline peak integration boundary selection and assign a confidence level to the association between the peak and its target peptide.

Getting Started

To start this tutorial, download the following ZIP file:

<https://skyline.gs.washington.edu/tutorials/PeakPicking.zip>

Extract the files in it to a folder on your computer, like:

C:\Users\brendanx\Documents

This will create a new folder:

C:\Users\brendanx\Documents\PeakPicking

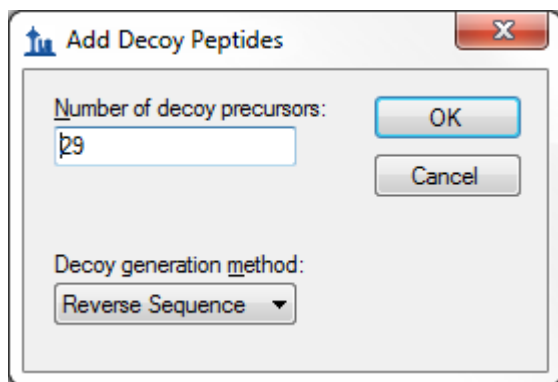
It will contain all the files necessary for this tutorial. Open the file SRMCourse_DosR-hDP__20130501-tutorial-empty.sky in this folder, either by double-clicking on it in Windows Explorer, or by choosing **Open** from the **File** menu (Ctrl-O) in a running instance of Skyline.

Creating Decoys

The skyline document you have opened should be blank aside from a list of target proteins and peptides. You will be importing and scoring some SRM data, but before you do, it is necessary to generate decoy peptides. Decoy peptides are peptide sequences that are not actually present in the sample but are measured in order to provide a negative control, which mProphet requires in order to assign confidence levels to the peaks it picks. Several methods for generating decoy peptides exist, including shifting the precursor and product mass-to-charge ratios of actual peptides, reversing the sequence of actual peptides, or randomly shuffling the sequences of actual peptides. For this tutorial, you will use reversed sequence decoys. Generally, mProphet works best if the number of decoys is comparable to the number of targets, or at least not radically smaller. To add the decoys:

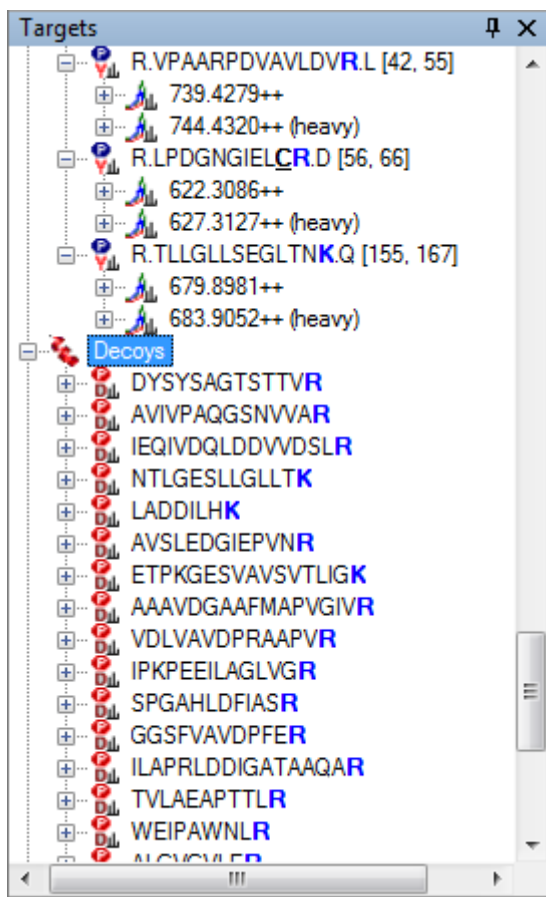
- On the **Edit** menu, choose **Refine** and then click **Add Decoy Peptides**.
- In the **Number of Decoy Precursors** field, enter '29'.
- In the **Decoy generation method** drop down list, select 'Reverse Sequence'.

The **Add Decoy Peptides** form should now look like this:



- Click the **OK** button.

A set of decoy peptides should appear below the real peptides in the **Targets** view of the main Skyline window:



Note: The number 29, used above, is the number of target peptides with stable isotope-labeled standards in this document. The other 15 peptides are either iRT standards or QC peptides, which will be discussed further later. The reverse sequence decoy generation method reverses the amino acids in the peptide sequence n-terminal of the K or R at the c-terminus, which is kept at the c-terminus. A shift of +10 m/z is also applied to all precursor m/z values. Otherwise, fragment ions are held constant in position (i.e. y_7 stays y_7) but should usually change in product m/z .

You may want to expand a few of the decoys to see more of this detail yourself now.

Importing SRM Data

The decoy peptides you have just generated include random shifts in product mass (this is done in addition to reversing the peptide sequence to avoid overlap with real transitions) and thus cannot be used in this particular dataset because they do not match the decoy peptides used in the SRM experiment. In a real SRM workflow, you would generate decoys before acquiring the data, so that the measured decoys matched the ones in Skyline. In this tutorial you will open another file with the decoy peptides that were actually measured for this experiment.

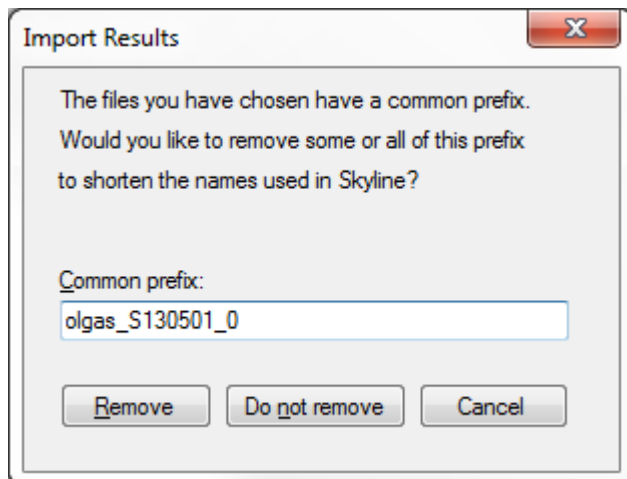
- Click the **Open** button on the Skyline toolbar (Ctrl-O).
- Click the **No** button when asked whether to save your changes to the first file.

- Select the file 'SRMCourse_DosR-hDP__20130501-tutorial-empty-decoys.sky' from the 'PeakPicking' folder you created for this tutorial.
- Click the **Open** button.

To import raw SRM data collected on an AB SCIEX QTRAP instrument into this document, do the following:

- On the **File** menu, choose **Import** and click on **Results**.
- Make sure **Add single injection replicates in files** is selected.
- Click the **OK** button.
- Select the files below, using Shift+mouse-click to make a multiple selection:
 - olgas_S130501_006_StC-DosR_B2.wiff
 - olgas_S130501_006_StC-DosR_C2.wiff
 - olgas_S130501_006_StC-DosR_A4.wiff
 - olgas_S130501_006_StC-DosR_B4.wiff
 - olgas_S130501_006_StC-DosR_C4.wiff
- Click the **Open** button.

Skyline will show a form suggesting that it can remove the common prefix on these files:

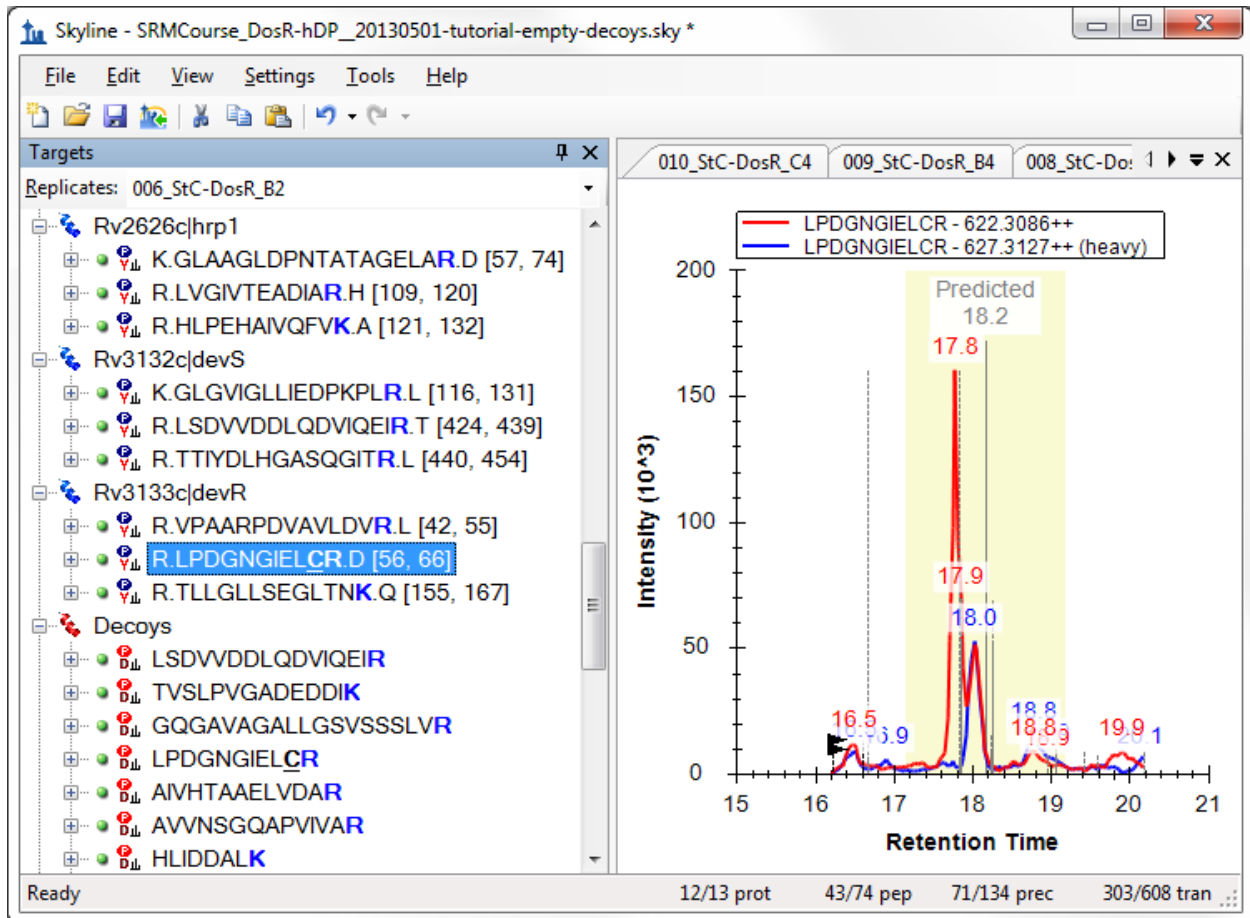


- Delete the 0 at the end of the **Common prefix** field.
- Click the **Remove** button.

Once loading is complete, chromatograms will be displayed for both the target (real) and decoy peptides.

- Select the peptide LPDGNGIELCR under the protein **Rv3133c|devR**, just above the 'Decoys' peptide list.
- Select '006_StC-DosR_B2' from the **Replicates** dropdown list, at the top of the **Targets** view.

Note that the Skyline default peak picking has selected an intense peak at 16.5 minutes, whereas (as you will see later) the correct peak is actually at 18.0 minutes, close to the predicted retention time, annotated at 18.2 minutes in the graph.

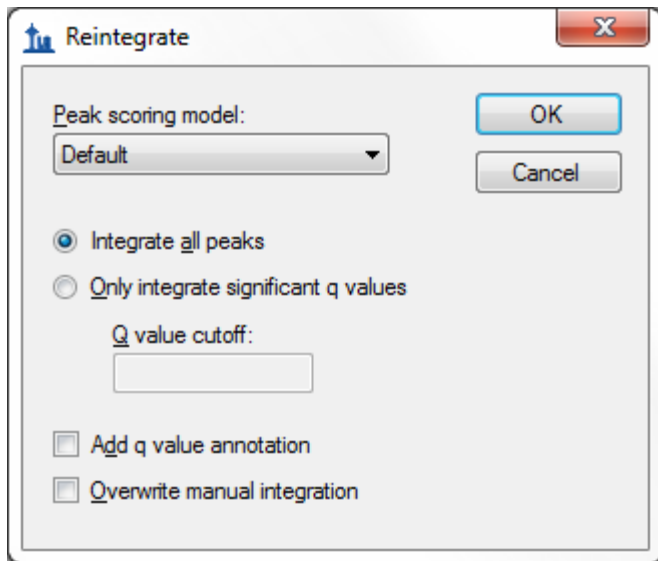


Training a Peak Scoring Model

Next you will train a scoring model and use it to improve Skyline peptide peak picking:

- From the **Edit** menu, choose **Refine** and click on **Reintegrate**.

You should see the following form:

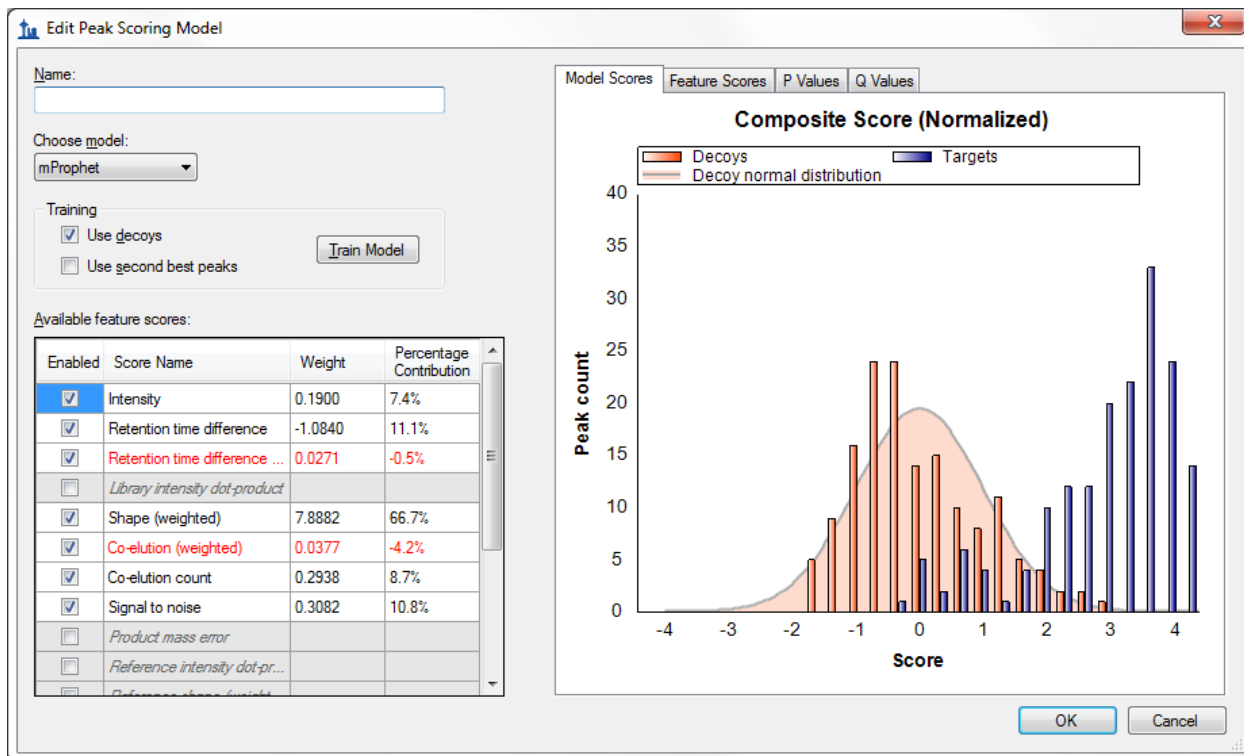


- From the **Peak Scoring Model** dropdown list, choose **<Add...>**.

A large form should appear.

- Click the **Train Model** button near the top left of the form.

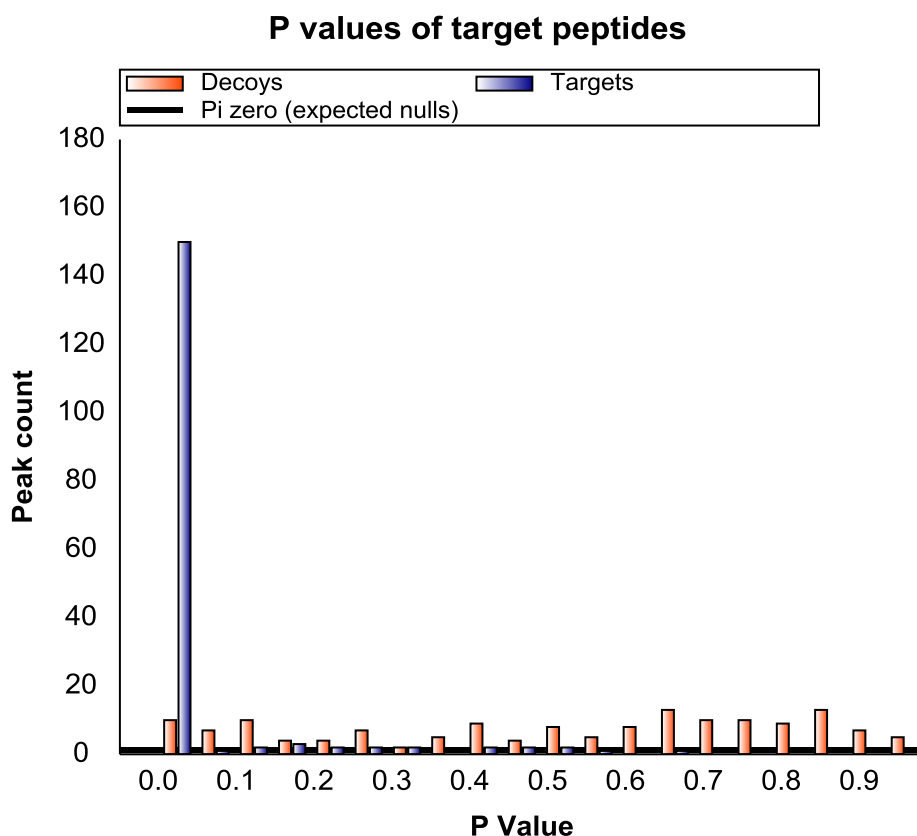
You should be presented with a screen that looks like this:



This form allows you to create and customize new peak scoring models, rather than always relying on the default heuristic Skyline Legacy scoring model. On the right is a graph of the composite score assigned to each decoy peak (orange bars) and each target peak (blue bars) by the model. A higher score indicates greater likelihood that the peak represents the correct peptide. The orange curve is a Gaussian fit of the decoy distribution as described in the mProphet algorithm¹. Note that most of the target peptides are to the far right of the decoy curve, indicating that the model assigns high confidence to these peak assignments. Whenever training a model, it is important to check that the decoy distribution is roughly Gaussian (the orange bars match the orange curve). If the distribution differs greatly from a Gaussian, the mProphet statistical results will not be valid. If you discover that your decoy distribution is very different from a Gaussian, it may be useful to try a different method of generating decoys, or to use one of the many ways of customizing the model (described later). Additional tabs show further statistical information:

- Click the **P Values** tab.

This will show the distribution of p values according to the Gaussian model to which the decoys were fit:

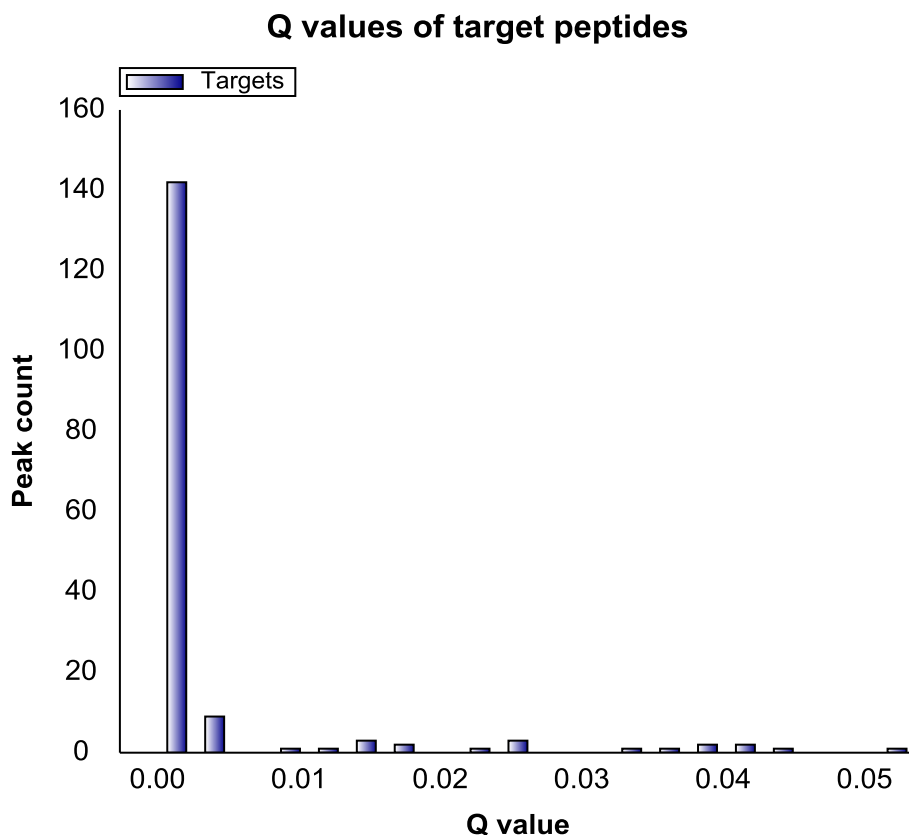


This graph is another way to assess whether decoys are Gaussian: if they are, the p values of the decoys should be uniformly distributed over the range from 0 to 1. The targets, on the other hand, should have a uniform background (indicating chromatograms where there is no real peak) but also a spike near zero

indicating the real peaks. Also shown is pi-zero, which is an estimate of the background rate of nulls. This pi-zero value is important in assigning a false discovery rate (q value) to each chosen peak. You can also see the q values themselves:

- Click the **Q Values** tab.

This will show a graph of the q values assigned to all the targets:



For a given FDR cut-off, any q value below the FDR value will be declared a true peak, and any q value above the FDR value will be declared a false peak.

In the bottom left is the list of **Available feature scores** that can contribute to the composite score. The meaning of the scores is as follows (more details can be found in the original mProphet and OpenSWATH papers^{1,2}):

Score Name	Score Description
Intensity	Log10(summed intensity) of all transition peaks in the precursor
Retention time difference	Abs(predicted RT - measured RT)
Library intensity dot product	Dot product between library spectrum and observed spectrum
Shape (weighted)	Weighted shape similarity between transitions (see mProphet paper)
Co-elution (weighted)	Weighted co-elution between transitions (see mProphet paper)
Co-elution count	Number of co-eluting transitions
Signal to noise	Log10(signal/noise ratio), defined as peak apex to background median

Product mass error	Product mass error weighted by intensity
Reference intensity dot product	Dot product between analyte and reference transition intensities
Reference shape (weighted)	Weighted shape correlation between reference and analyte (see mProphet paper)
Reference co-elution (weighted)	Weighted co-elution (autocorrelation shift) between reference and analyte (see mProphet paper)
Reference co-elution count	Number co-eluting reference transitions times
Precursor-product shape score	Correlation between most intense precursor and most intense product ion
Precursor mass error	Mass error over precursor ions weighted by intensity
Precursor isotope dot product	Dot product between expected and observed precursor isotope distribution
Identified count	Number of identified peptides within the peak boundaries

Scores that do not apply are grayed and blanked out, e.g. the **Product mass error** score is grayed here, because Skyline only calculates mass errors for chromatograms extracted from high resolution mass spectra. Scores that are undefined for at least one peptide are also grayed. The **Weight** of each score is the coefficient assigned to it in the composite score. However, the weights are not normalized (i.e. they can have very different scales), so Skyline also shows a normalized measure (**Percentage Contribution**) that gives a rough indication of the relative contribution of each score to the separation of decoys from targets. Using this measure, you can see that, of the available scores, the **Shape (weighted)** score is the strongest single contributor to the separation of targets from decoys (accounting for 62.2%).

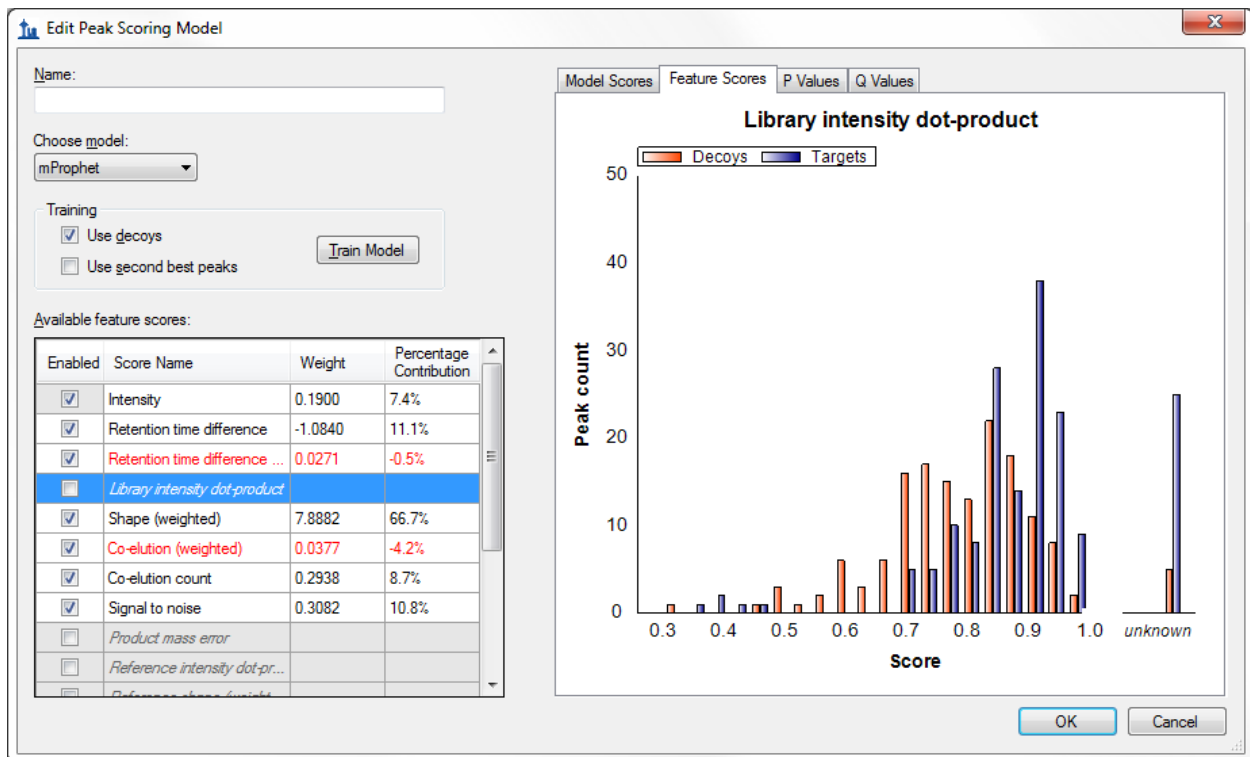
You can also visually examine the performance of each score:

- Above the graph on the right side, click the **Feature Scores** tab.

As indicated by the title, the graph now shows the **Intensity** score for all peptides. Clicking on each row of the **Available feature scores** grid will change the graph to show the scores for that row. Looking at individual scores helps to visualize which calculators are useful and which are not, and will also help you to track down missing values:

- Click on the **Library intensity dot-product** row in the **Available feature scores** grid.

The graph should change to the following:



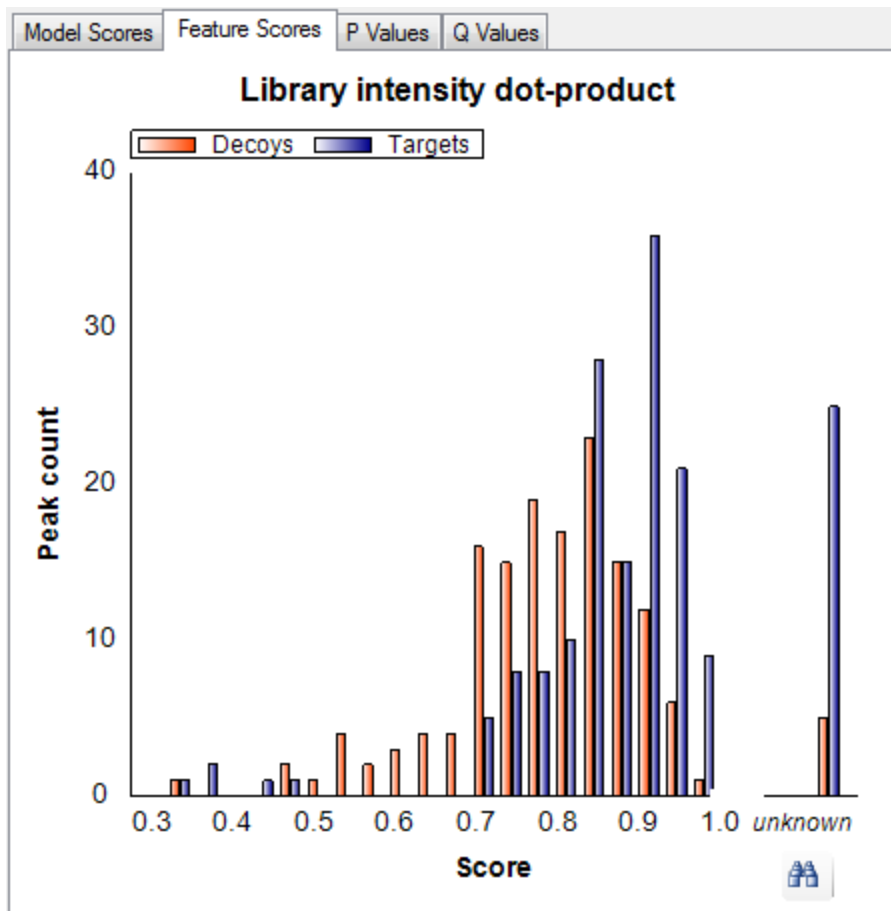
Note that the library dot-product is “unknown” for several of the target values, and for this reason the score is grayed and not used in the model. This is also the case for several other scores – some are missing values for every peptide, while others are missing values for only a few peptides.

Handling Missing Values

To find and remove the peptides missing library dot-product values, do the following:

- Move the mouse over the bar labeled **unknown** in the **Feature Scores** graph.

A find button () should appear.



- Click the find button.

A **Find Results** view should appear in the background, docked at the bottom of the Skyline window and containing a list of the peptides for which the **Library intensity dot-product** score is unknown. In this case, there are 6 peptides that are missing this score, 5 target peptides and 1 decoy peptide. Each peptide is measured in 5 files, so there are a total of 30 missing peaks for these scores. To use the **Find Results** view, save your current model and return to the Skyline main window:

- In the **Name** field, enter 'test1'.
- Click **OK** to close the **Edit Peak Scoring Model** form.
- Click **Cancel** to close the **Reintegrate** form.

Make sure that you do NOT click **OK** on the **Reintegrate** form, as that would apply the model to all the peaks in the document, which we are not yet ready to do. (If you did, click **Undo** now.)

On the **Find Results** dialog, there should be 6 peptides in the list.


Find Results		
Location	Type	Text
LGGNEQVTR	Peptide	Library intensity dot-product missing from peptide
IPVDSIYSPVLK	Peptide	Library intensity dot-product missing from peptide
YFNDGDIVEGTIVK	Peptide	Library intensity dot-product missing from peptide
DFDSLGTLR	Peptide	Library intensity dot-product missing from peptide
R.GGYAGMLVGSVGETVAQLAR.T [266, 2...	Peptide	Library intensity dot-product missing from peptide
GGYAGMLVGSVGETVAQLAR	Peptide	Library intensity dot-product missing from peptide

Ready 1/13 prot 1/74 pep 1/134 prec 1/608 tran ...

- Double-click on the first peptide in the list, LGGNEQVTR.

Skyline should navigate to the peptide LGGNEQVTR in the **Targets** view.

- Click on the peptide in the **Targets** view to make sure it is selected.

Note that this peptide has no library spectrum, explaining why its **Library intensity dot-product** is unknown. Since scores are disabled when one or more values are missing, you must deal with all 6 peptides shown in the **Find Results** view to make the **Library intensity dot-product** score active. This first peptide appears under the 'iRTpeptides' list. While it is one of the 11 peptides in the iRT mix used in this experiment, it was obviously not included in the iRT calculator for this document. In the **Targets** view, it lacks the tiny clock icon  (in the upper-right corner of the peptide icon) indicating an iRT standard peptide. Skyline automatically excludes standard peptides from scoring consideration. Although, in this document, all of the other iRT peptides have matching library spectra. To handle this case now, delete this peptide:

- Press the delete key on your keyboard to delete the peptide.

Proceed to the next peptide in the list:

- Double-click on the second peptide in the list, IPVDSIYSPVLK.

You will find this peptide in a list named 'PosCtrl' with two other peptides which lack matching library spectra. These are also standard peptides, added to the document before Skyline supported document-wide peptide standards. Skyline will ignore any peptide standard (iRT, Normalization or QC) in score training. So, here you can simply mark these peptides as QC standards to avoid having to delete them from the document:

- Hold down the Shift key and click on the peptide DFDSLGTLR to select all 3 peptides.
- Right-click in the selection, choose **Set Standard Type** and click **QC**.

Now delete the last two peptides GGYAGMLVGSVGETVAQLAR and its corresponding decoy:

- Double-click on each of the last 2 peptides in the **Find Results** window, and delete each.
- Close the **Find Results** window.

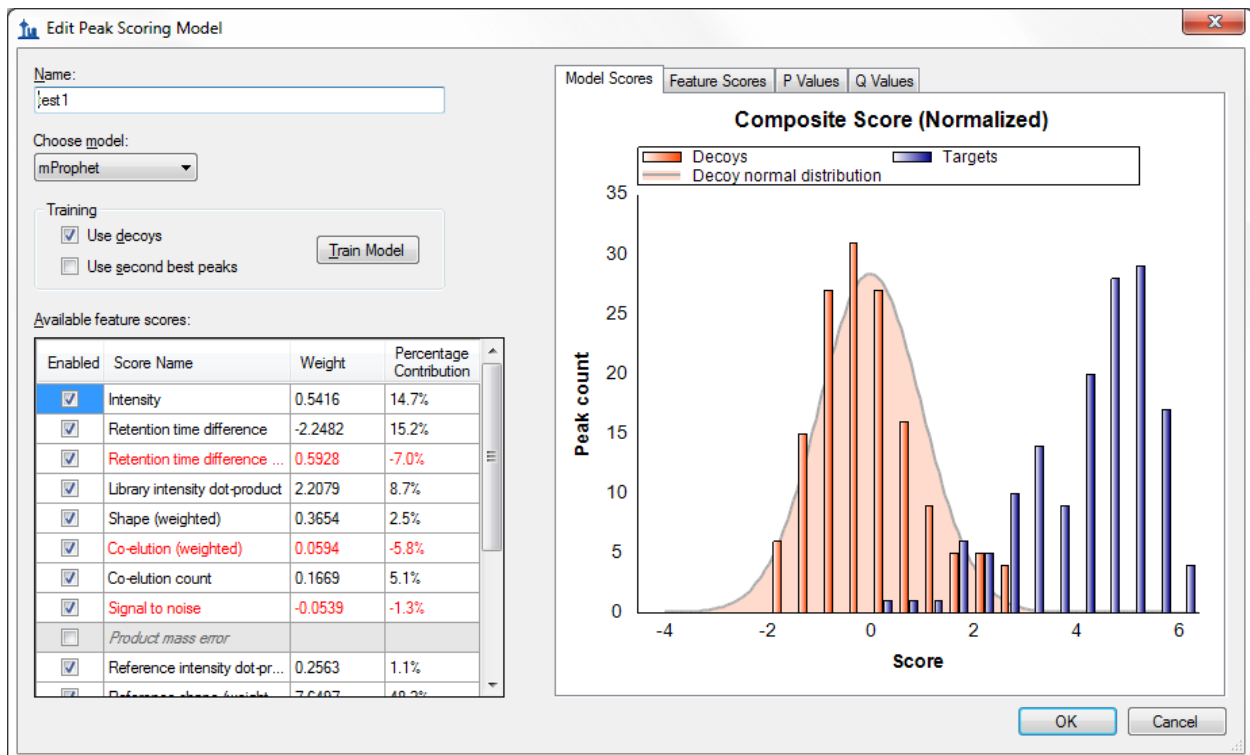
Now return to the **Edit Peak Scoring Model** form:

- From the **Edit** menu, choose **Refine** and click on **Reintegrate**.
- From the **Peak scoring model** drop down list, select “test1”.
- From the **Peak scoring model** drop down list again, select **<Edit current...>**.

Note that the **Library intensity dot-product** score is no longer grayed. All 4 **Reference** scores are also no longer grayed. Four of the peptides you found in the list were also missing stable isotope labeled reference standards. You deleted one, the extraneous iRT peptide, and marked the other 3 as QC standards, which caused them to be excluded from this score modeling. Without missing values in the document, these scores are now available for use in a scoring model. To retrain the model to include them, do the following:

- Check the **Library intensity dot-product** row in the **Available feature scores** list.
- Check the **Reference intensity dot-product** row in the **Available feature scores** list.
- Check the **Reference shape (weighted)** row in the **Available feature scores** list.
- Check the **Reference co-elution (weighted)** row in the **Available feature scores** list.
- Check the **Reference co-elution count** row in the **Available feature scores** list.
- Click the **Train Model** button to retrain the model based on the changes you made to the targets list.

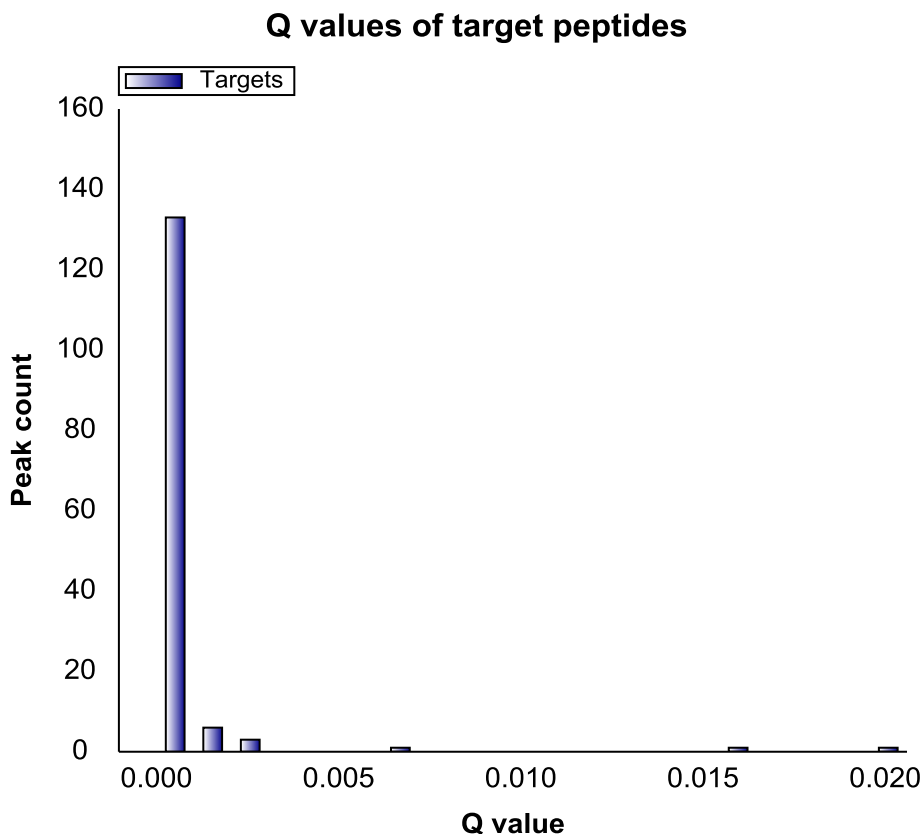
The **Library intensity dot-product** score should now have a weight and a percent contribution, and scoring should be slightly improved. The **Edit Peak Scoring Model** form should look like this:



The **Q Values** plot will now be improved as well:

- Click the **Q Values** tab.

You should see a graph like the following:



As you can see, most of the q values are now smaller after adding the new scores, indicating higher confidence in the picked peaks.

- Click the **OK** button to save the changes to the **Edit Peak Scoring Model** form.

Customizing the Model

Next, this tutorial will cover options to customize and refine a peak scoring model.

- From the **Peak scoring model** dropdown list, select **<Edit current...>**.

Notice the check boxes in the **Enabled** column of the **Available feature scores** list. Unchecking a score will remove it from the model upon re-training, which allows you to pick and choose which scores are used. Scores which make a negative contribution (and thus *may* be advisable to remove) are shown in red.

- Uncheck the **Signal to noise** score (scrolling may be necessary).
- Uncheck the **Co-elution (weighted)** score.

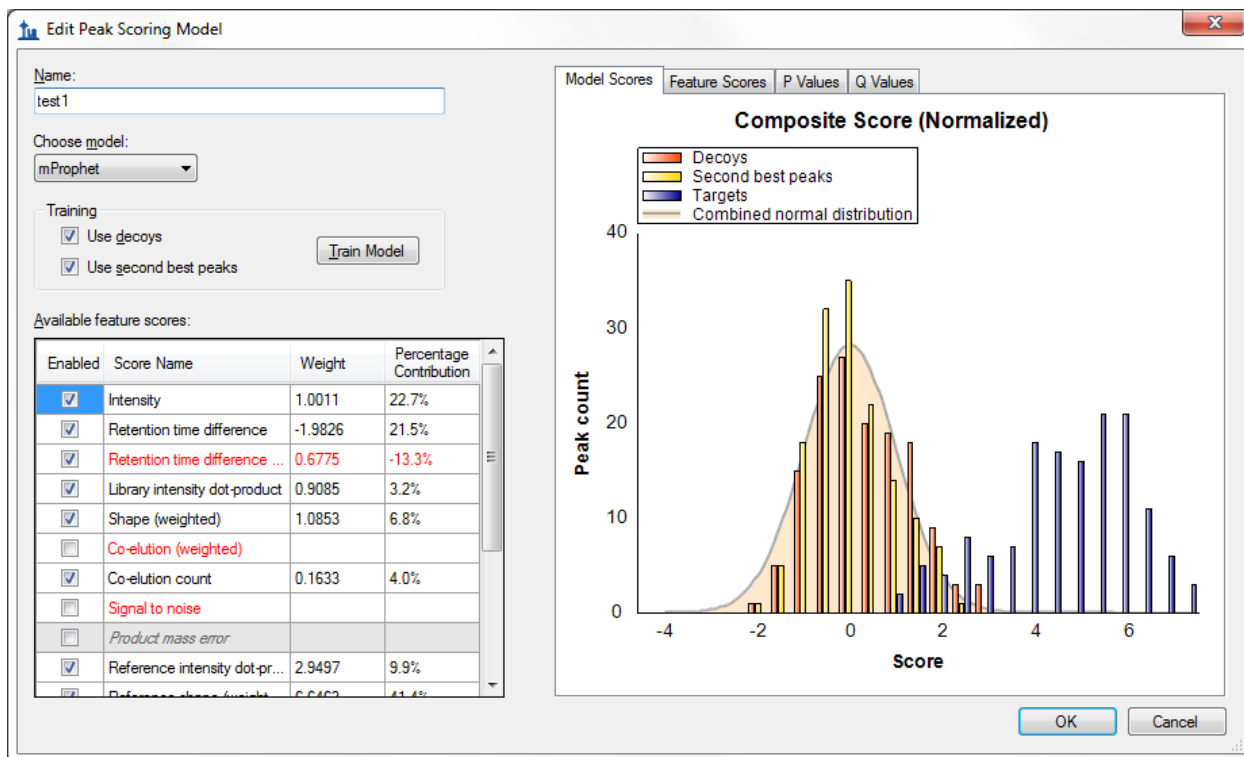
Now notice the **Use decoys** and **Use second best peaks** check boxes in the **Training** section of the form. These check boxes designate which peaks are used as controls in training the model. So far you have used the decoy peptides that were generated prior to data acquisition. An alternative method is to examine the second highest scoring peaks in the chromatograms of the real peptides, based on the high probability that these are not the correct peaks but may in some ways be more realistic representations of incorrect peaks than the peaks found in chromatograms for decoy peptides. Or, you can use both types of peak. To try this, do the following:

- Check **Use second best peaks**.
- Leave **Use decoys** checked also.

The yellow bars represent the second best peaks. Note that the distribution of second best peaks is similar to the distribution of decoys, suggesting that they do an equally good job representing realistic background. When the model is retrained, both the decoys and the second best peaks will be used in the training. Note that none of these changes have taken effect yet. For this to happen, you must re-train the model:

- Click the **Train** button.

The graphs should now update and the scores that were unchecked should be removed. The model should look like this:



You will not use this modified model. To return to the original model, simply cancel the form:

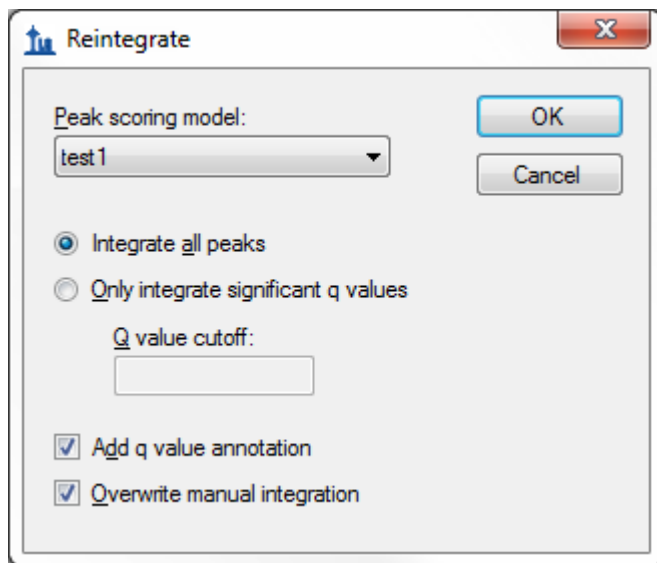
- Click the **Cancel** button.

Applying the Model to Improve Peak Picking

The next step is to apply the trained model to the peaks picked by Skyline. Having just closed the **Edit Peak Scoring Model** form, you should be back in the **Reintegrate** form. You are now ready to apply the model you have just trained. You have the option to use the highest scoring peaks, using the composite score you have just trained, in all cases (**Overwrite manual integration**), or to leave in place any peaks that have been picked manually (which may have been carefully curated). Checking **Add q value annotation** will cause a statistical q value to be attached to every peak, which can then be exported in a Skyline report. In this tutorial you will use both of these options:

- Make sure **Integrate all peaks** is selected.
- Check the **Add q value annotation** check box.
- Check the **Overwrite manual integration** check box.

The **Reintegrate** dialog box should look like this:

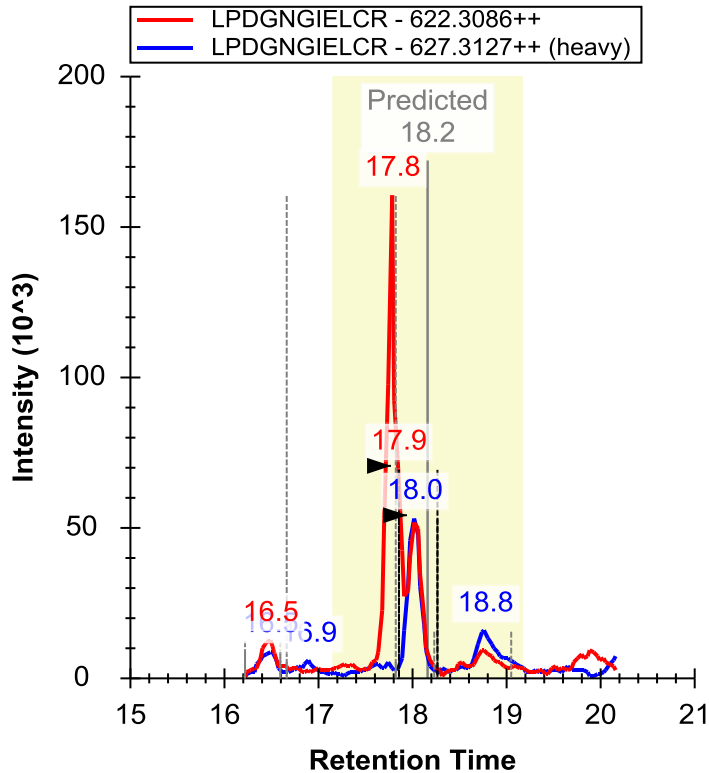


- Click the **OK** button.

A form displaying a progress bar should appear and after a few seconds the reintegration should complete.

- Select the peptide **LPDGNGIELCR** under the protein **Rv3133c|devR**, just above the 'Decoys' peptide list.
- Select '006_StC-DosR_B2' from the **Replicates** dropdown list, at the top of the **Targets** view.

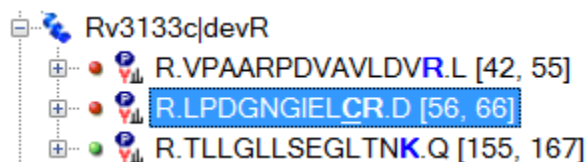
Note that after reintegration, the chosen peak for this peptide/replicate is now at the correct position of 18.0 minutes.



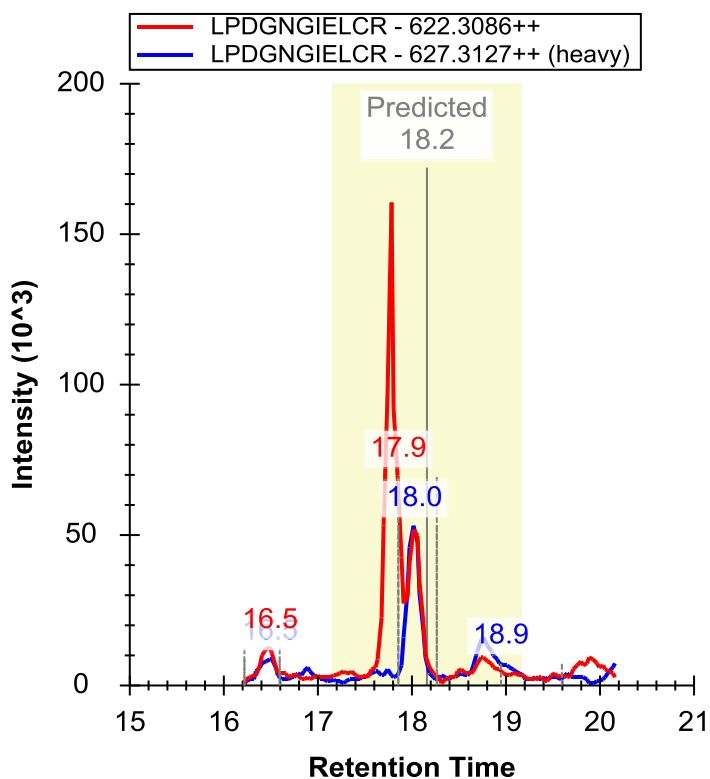
Now try reintegrating in a slightly different way by doing the following:

- From the **Edit** menu, choose **Refine** and click on **Reintegrate**.
- Select **Only integrate significant q values**.
- In the **Q value** cutoff field, enter '0.001'.
- Check **Overwrite manual integration**
- Check **Attach q value annotation**
- Click the **OK** button.

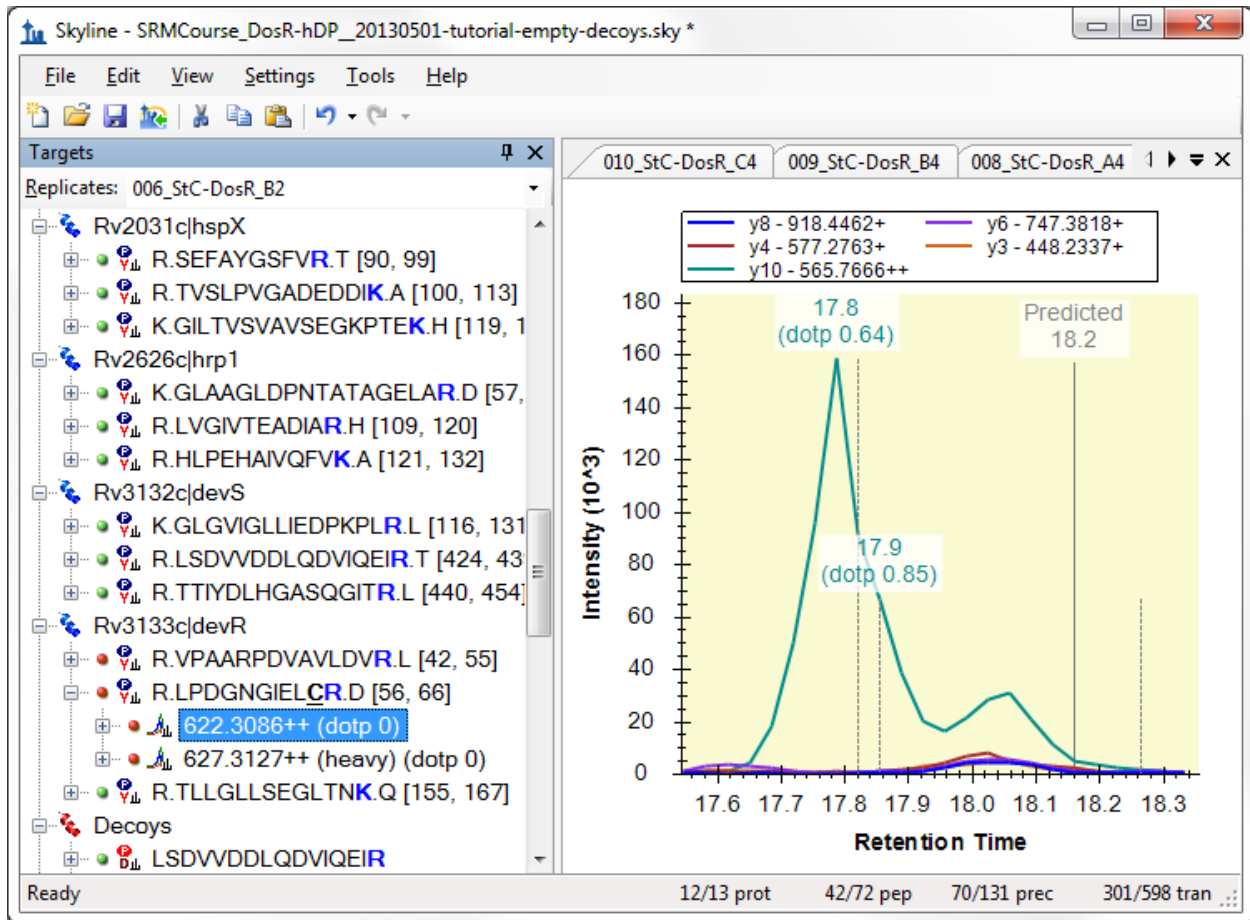
This will cause Skyline to pick only peaks with an estimated false discovery rate (q value) of 0.001 or lower (i.e. there is a 99.9% chance that any chosen peak is correct). In peptides for which no detected peak meets this criterion, Skyline will not choose any peak. In the **Targets** view, a peptide with no chosen peak will have a red dot left of its sequence:



This is now the case for the peptide LPDNGIELCR in the replicate 006_StC-DosR_B2. You will also see that the chromatogram graph now lacks the right-pointing arrowheads, indicating the chosen peak:



This can be different for each replicate, however, and if you use the **Replicates** dropdown list at the top of the **Targets** view to review each replicate for this peptide, you will see that 4 out of 5 (007, 008, 009 and 010) have chosen the correct peak, while the last replicate (006) has no chosen peak. This is likely due to the apparent interference on the y10 ion in the analyte precursor, which you can see better, if you select it (622.3086++) in the **Targets** view and zoom in a little:



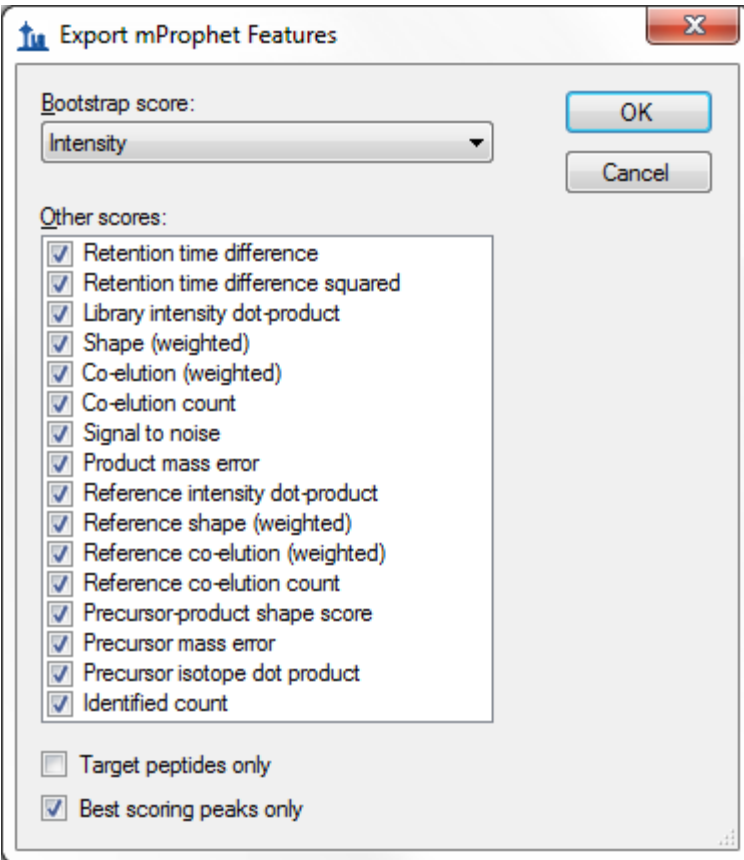
Any peak picking algorithm might do better with this peak, if the y10 ion were removed.

Exporting Peak Scoring Results (mProphet)

To directly see the scores and false discovery rates of each peptide, you can export this information to a text file. There are two options for doing this. The first is to export into mProphet format, which shows all the individual feature scores for each peptide, as well as the composite score, the p value, and the q value. The second is to use a skyline report, which can attach a q value to any data columns available in the report form. You will start with the first method:

- From the **File** menu, choose **Export** and click on **mProphet Features**.
- Check **Best Scoring Peaks Only**.

The **Export mProphet Features** form should look like this:



- Click the **OK** button.
- In the **File name** field, enter “mProphet_Exported_scores.csv”.
- Click the **Save** button.

A form with a progress bar may appear, and after a few seconds the file should be saved.

- Open the file in Excel or Notepad.

There should be a series of columns containing information about each peptide, and a list of individual scores for that peptide. There should also be a column called “qValue”, which contains the estimated false discovery rate if all peptides with q value at least as good as this peptide are counted as real.

- Close the file and return to Skyline.

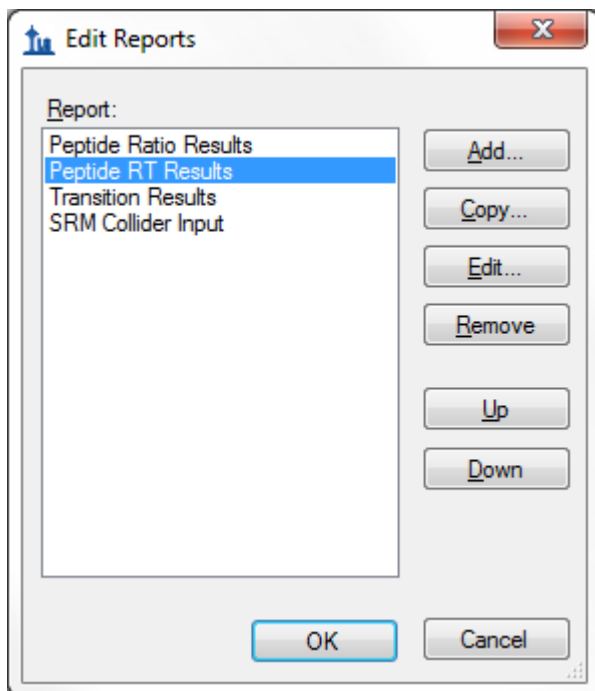
Exporting Peak Scoring Results (Skyline report)

You can also obtain q-value information from a Skyline report, if you have checked the **Add q value annotation** check box in the **Reintegrate** form. This method does not show individual feature scores, but has the advantage that you can combine it with any other columns available in a Skyline report.

- From the **File** menu, choose **Export** and click on **Report**.
- Click the **Edit List** button.

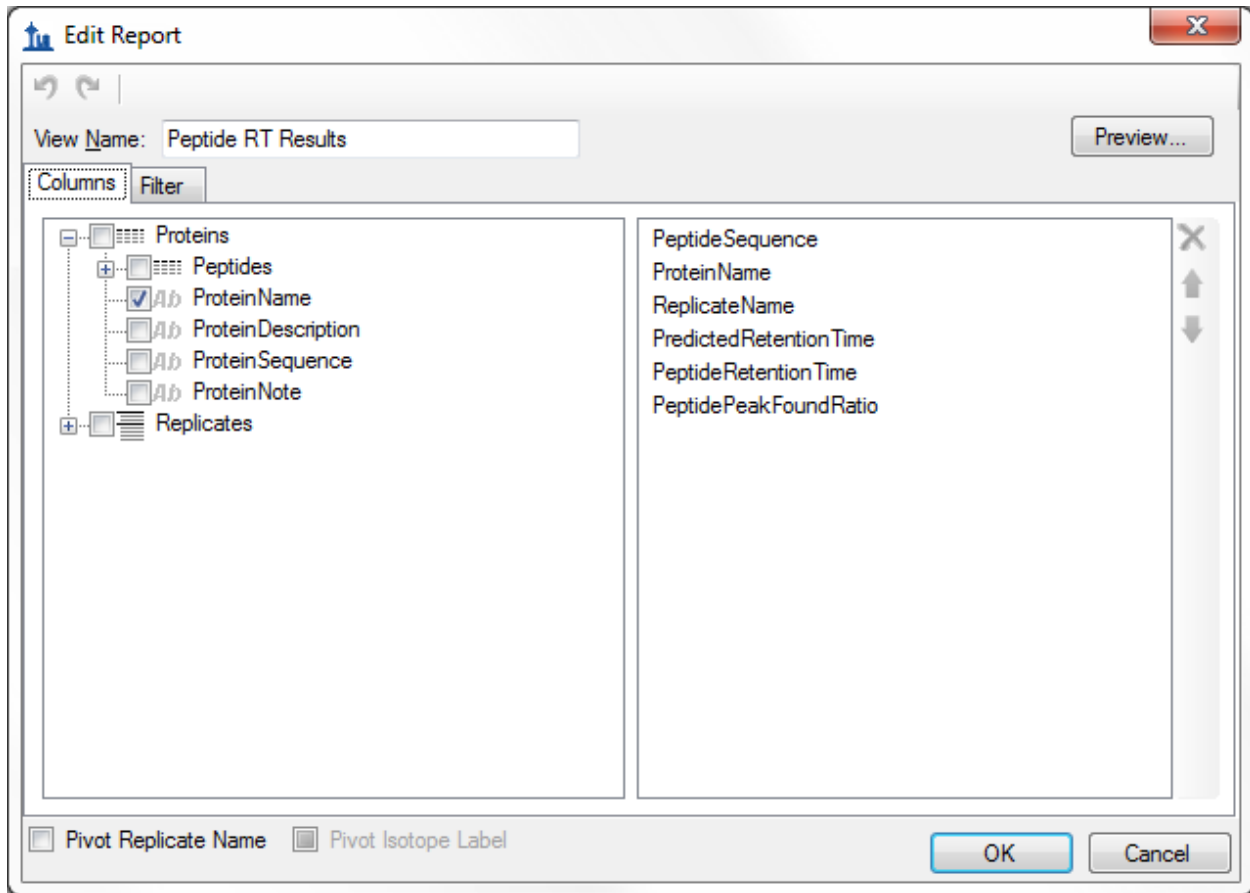
- Select the **Peptide RT Results** from the **Report** list.

The form should look like this:



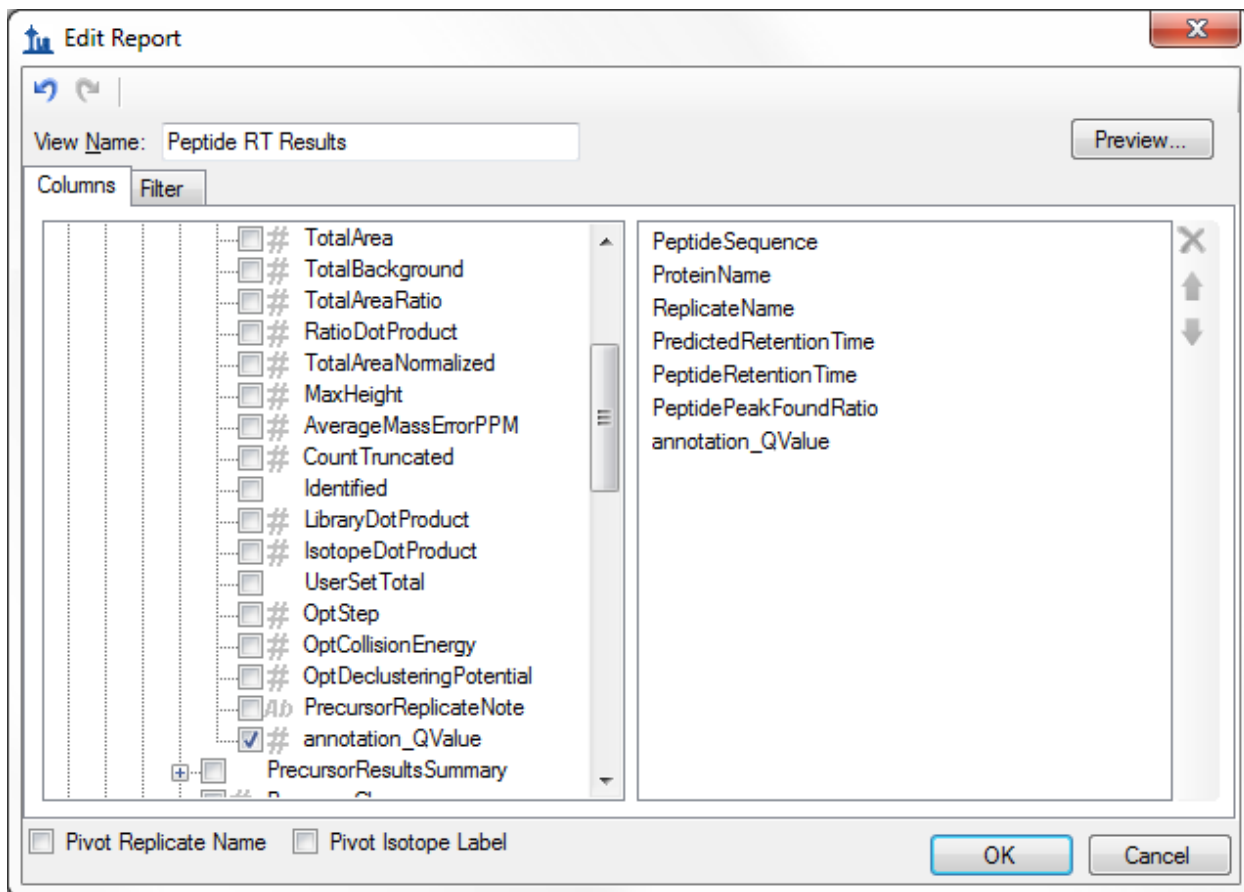
- Click the **Edit** button.

The **Edit Report** form should appear as follows:



- On the left side of the form, click on the plus icon by **Peptides** to expand the list.
- Under **Peptides** click on the plus icon by **Precursors** to expand the list.
- Under **Precursors** click on the plus icon by **PrecursorResults** to expand the list.
- Click on the check box by the **annotation_Q Value** entry under **Precursor Results**.

The **Edit Report** form should now look like this:



- Click the **OK** button.
- Click the **OK** button in the **Edit Reports** form.
- Select the **Peptide RT Results** item in the **Report** list.
- Click the **Export** button.
- In the **File name** field, enter "qValues_Exported_report.csv".
- Click the **Save** button.

A form with a progress bar may appear, and after a few seconds the file should be saved.

- Open the file in Excel or Notepad.

There should be a series of columns containing information about each peptide, including file name, peptide sequence, and so forth. There should also be a column called "qValue", which contains the estimated false discovery rate just as the mProphet exported file did.

- Close the file and return to Skyline.

The Skyline development team is working to make this info about peptide ID confidence available within Skyline (perhaps visible on the chromatogram graph), so that the text export step described above is not necessary. However, for now, exporting to text (via either method) is the only way to directly obtain information on peptide ID confidence.

Training a Peak Scoring Model for DIA Data

In addition to SRM, Skyline trained peak scoring models can also be used to improve the accuracy and assess the confidence of peak identifications in DIA data. Peak scoring a statistical confidence metric is even more essential with DIA data, since there can be a greater number of interfering peaks and potentially a larger number of peptides to analyze (for whole-proteome DIA experiments), making manual assessment of each peptide less tractable.

To open the DIA dataset included with this tutorial, do the following:

- Click the **Open** button on the Skyline toolbar (Ctrl-O).
- Click the **No** button when asked whether to save your changes to the first file.
- Select the file 'AQUA4_Human_picked_napedro2-mod2.sky' from the 'PeakPicking' folder you created for this tutorial.
- Click the **Open** button.

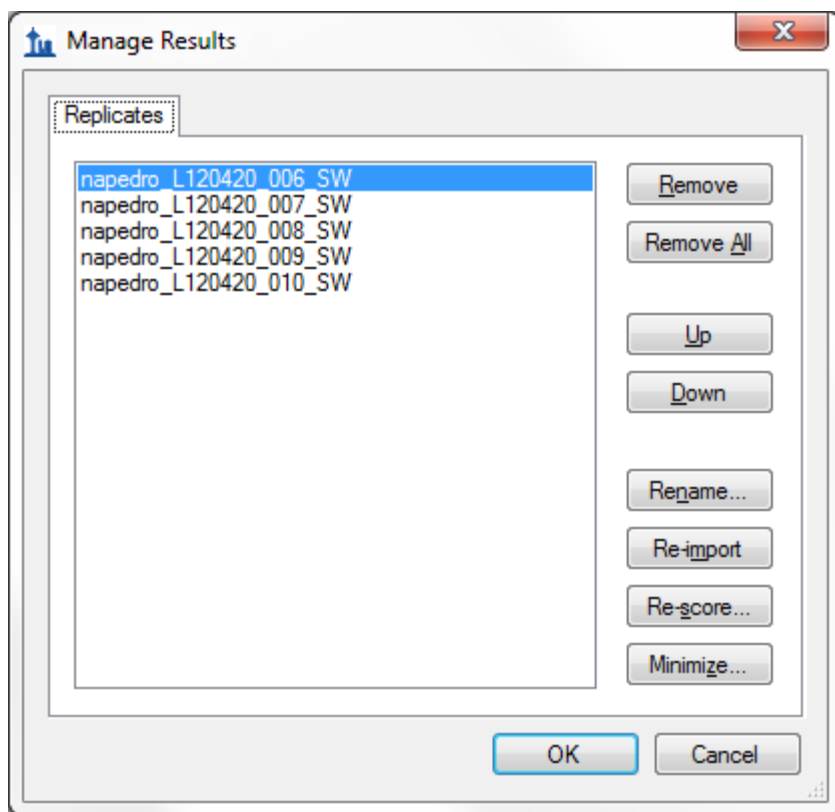
This file contains some of the data that was used to test the OpenSWATH algorithm, some of which is now incorporated into the advanced peak scoring model functionality you are exploring. The file contains a dilution series of a known peptide mix. In a real DIA workflow, the settings on the **Transition Settings - Full Scan** tab would need to be configured for DIA; decoys would need to be generated, and the raw DIA data would need to be imported. However, since raw DIA data files are so large (hundreds of Megabytes to several Gigabytes), for this tutorial the file you have opened only contains target peptide chromatograms extracted from 5 DIA raw files, which allows to reduce the Skyline file size significantly.

The DIA files you will be opening contain peaks that were manually picked for the purpose of comparison with the automated OpenSWATH algorithm. In a real workflow all peptides/files would contain full chromatograms, but in this tutorial the chromatograms have been artificially restricted to a 10 minute window around the predicted peak in order to keep the file sizes small.

This DIA data was loaded into Skyline before advanced peak scoring was available, so the first step will be to re-score the document so that the proper feature scores are available. This re-scoring must be performed on any document created before Skyline v2.1.1.xx in order to use advanced peak picking:

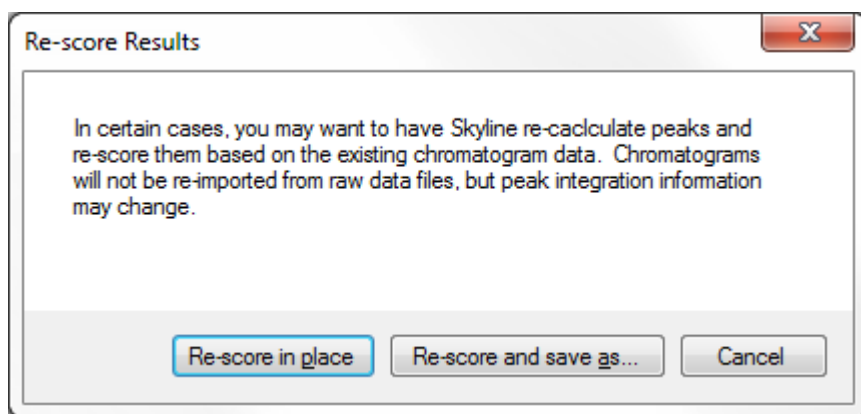
- On the **Edit** menu, click **Manage Results**.

A form like the following should appear:



- Click the **Re-score** button

The following form should appear:



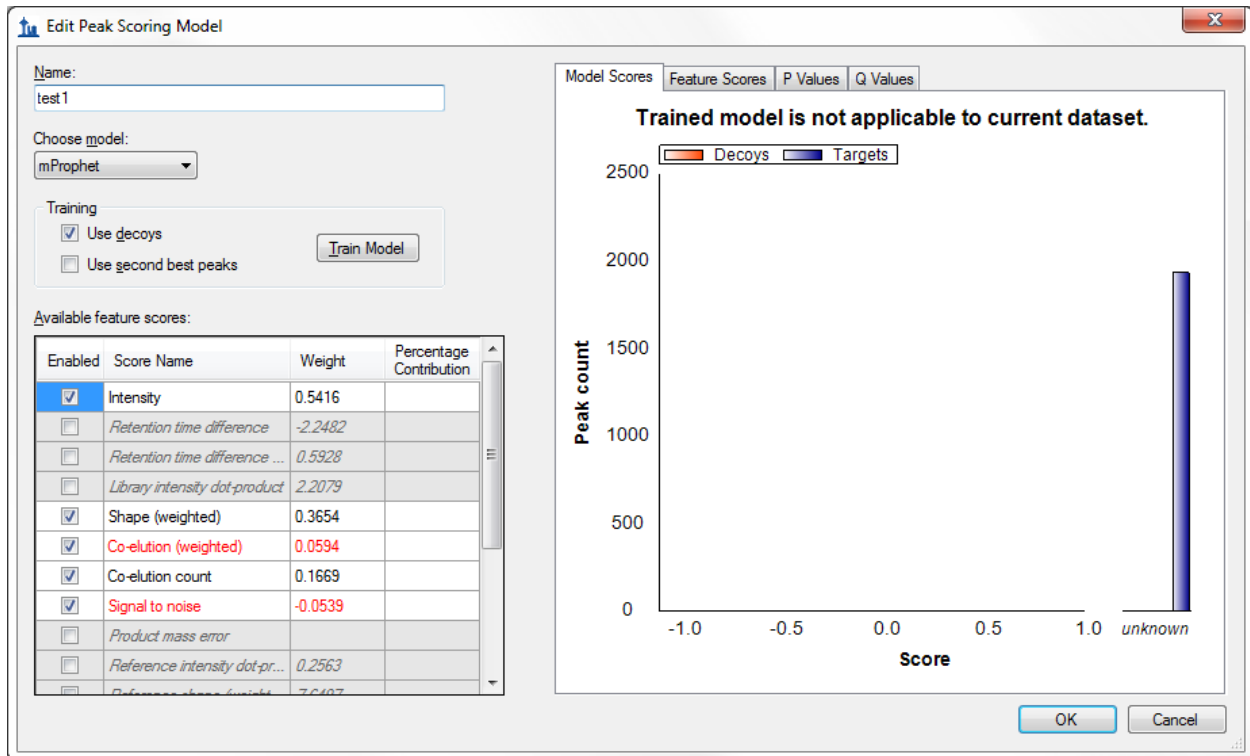
- Click the **Re-score in place** button.

A chromatogram load window will appear as all five replicates are re-scored. Wait for the loading to complete. Advanced feature scores will now be available.

Do the following to return to the **Edit Peak Scoring Model** form:

- From the **Edit** menu, choose **Refine** and click on **Reintegrate**
- From the **Peak Scoring Model** dropdown list, choose the 'test1' model you trained from the SRM dataset.
- Select **<Edit current...>**.

This will show the model from the previous dataset, applied to the peptides in the present dataset.

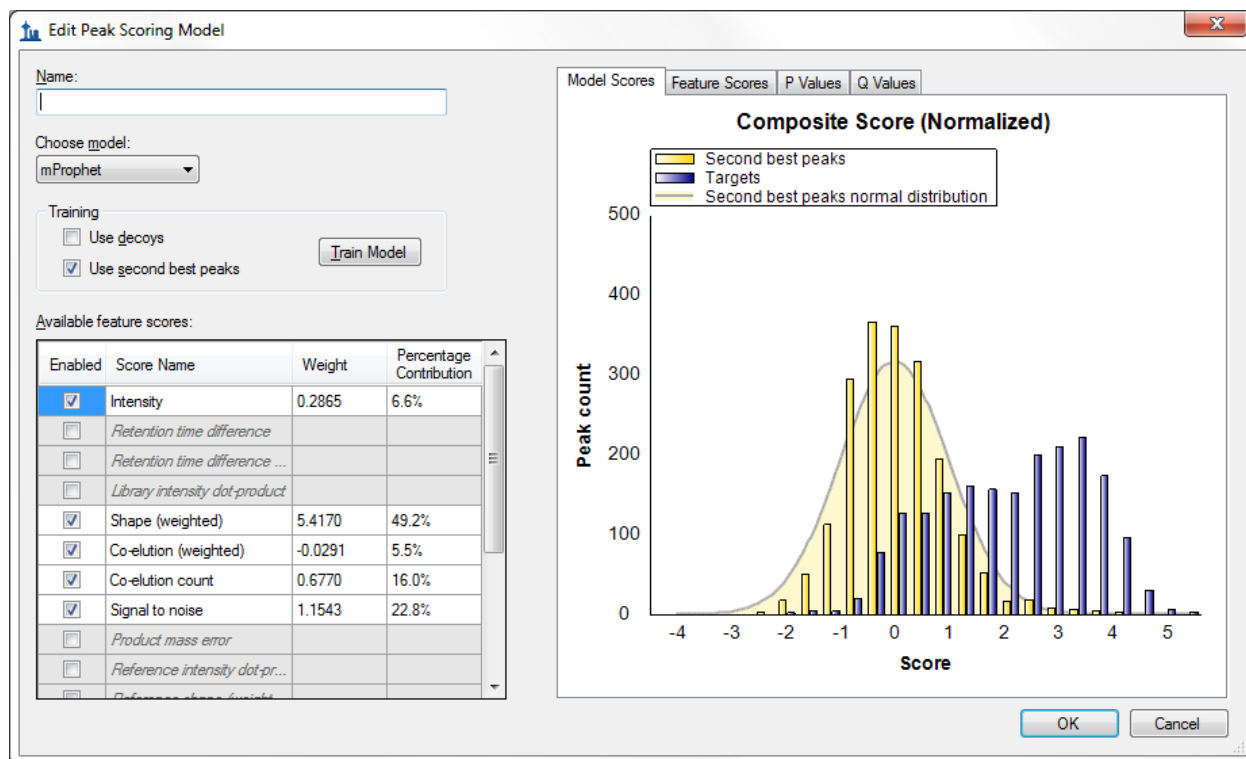


A model trained on one dataset can be applied to another, or you can train a new model for each dataset, provided your dataset contains enough peptides. Because the previous model was trained on SRM data, which contained isotopic standards, it is not applicable to the current dataset. You can see that the graph title says **Trained model is not applicable to current dataset**. Also, some of the scores (e.g. **Retention time** difference) have weights but are grayed, indicating that the model needs these scores to evaluate peptides, but they are not available, meaning that the composite model score is undefined.


You will need to train a new model specifically for this dataset to use advanced peak picking. Perform the following steps to do this:

- Click the **Cancel** button to exit the **Edit Peak Scoring Model** form
- Select **<Add...>** from the **Peak scoring model** dropdown list on the **Reintegrate** dialog.
- Uncheck the **Use decoys** check box in the **Training** section (this dataset has no decoys).
- Check the **Use second best peaks** check box in the **Training** section.
- Click the **Train** button to train a new model.

The model should look like this:



Note that some of the scores that were unavailable in the SRM model are available here, such as **Product mass error**. This is because the current DIA dataset has chromatograms extracted from high resolution full-scan mass spectra. As for the SRM data set, we can increase the number of active scores by finding and deleting peptides with unknown scores.

- Above the graph on the right side, click the **Feature Scores** tab.
- Click on the **Library intensity dot-product** row in the **Available feature scores** grid
- Move the mouse over the bar labeled **unknown** in the **Feature Scores** graph.
- A find button () should appear – click it.

A **Find Results Form** should appear behind the **Edit Peak Scoring Model** window, showing many peptides that lack a library dot product. You won't remove them in this tutorial, but your own data sets you could. Instead, you can use the model as is to peak peaks as follows:

- In the **Name** field, enter "test DIA".
- Click the **OK** button to save this model.

Now you can apply the model as you did before for the SRM dataset:

- On the **Reintegrate** dialog make sure **Integrate all peaks** is selected.
- Check the **Overwrite Manual integration** checkbox
- Click the **OK** button.

Skyline should adjust peak boundaries as it did before.

Conclusion

The Skyline team is actively working to improve advanced peak picking beyond the capabilities offered in this tutorial, particularly with regard to handling missing values and more directly displaying q values (peptide identification confidence), and we encourage you to watch for improvements in the future. This tutorial should however provide enough basics to get started on advanced peak picking for DIA and SRM data sets, allowing selection of peaks to be greatly improved over the Skyline default peak picking.

Bibliography

1. Reiter, L. *et al.* mProphet: automated data processing and statistical validation for large-scale SRM experiments. *Nat. Methods* **8**, 430–435 (2011).
2. Hannes L. Röst *et al.* OpenSWATH: A tool for the automated, targeted analysis of data-independent acquisition (DIA) MS-data. *Nat. Biotechnol.* doi:accepted