

Agenda

- ▶ Welcome from the Skyline team!
- ▶ **Jump start DIA analysis with DDA data in Skyline**
- ▶ Introduction with Brendan MacLean
 - ▶ Workflow overview
 - ▶ Method overview and considerations
 - ▶ Alternative workflows
- ▶ Live tutorial with Jarrett Egertson – Contributor – DIA
- ▶ Audience Q&A – submit questions to Google Form:
<http://tinyurl.com/QA4Skyline> (also in chat window)



Chromatography-based Quantification

- ▶ Hypothesis testing (Verification)
- ▶ SRM
- ▶ MSI chromatogram extraction
- ▶ Targeted MS/MS (PRM)
- ▶ **Data independent acquisition (DIA/SWATH)**



Acquisition	Targeted	Survey
More Selective	PRM	DIA
Less Selective	SRM	MSI

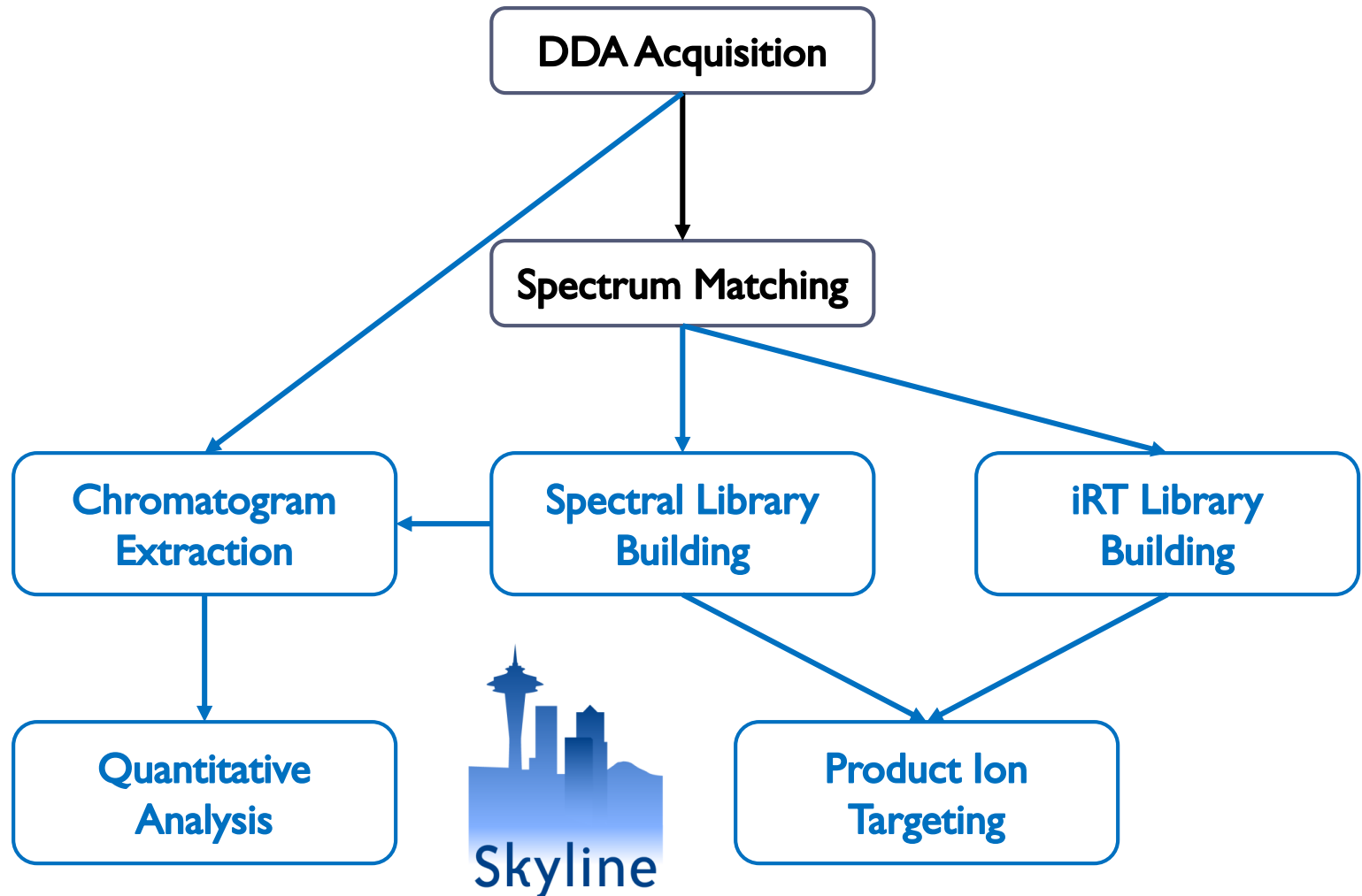
Got HYPOTHESIS??



Multiple Instrument Vendors



Webinar 1 Overview



Overview

DDA Acquisition

DIA Acquisition

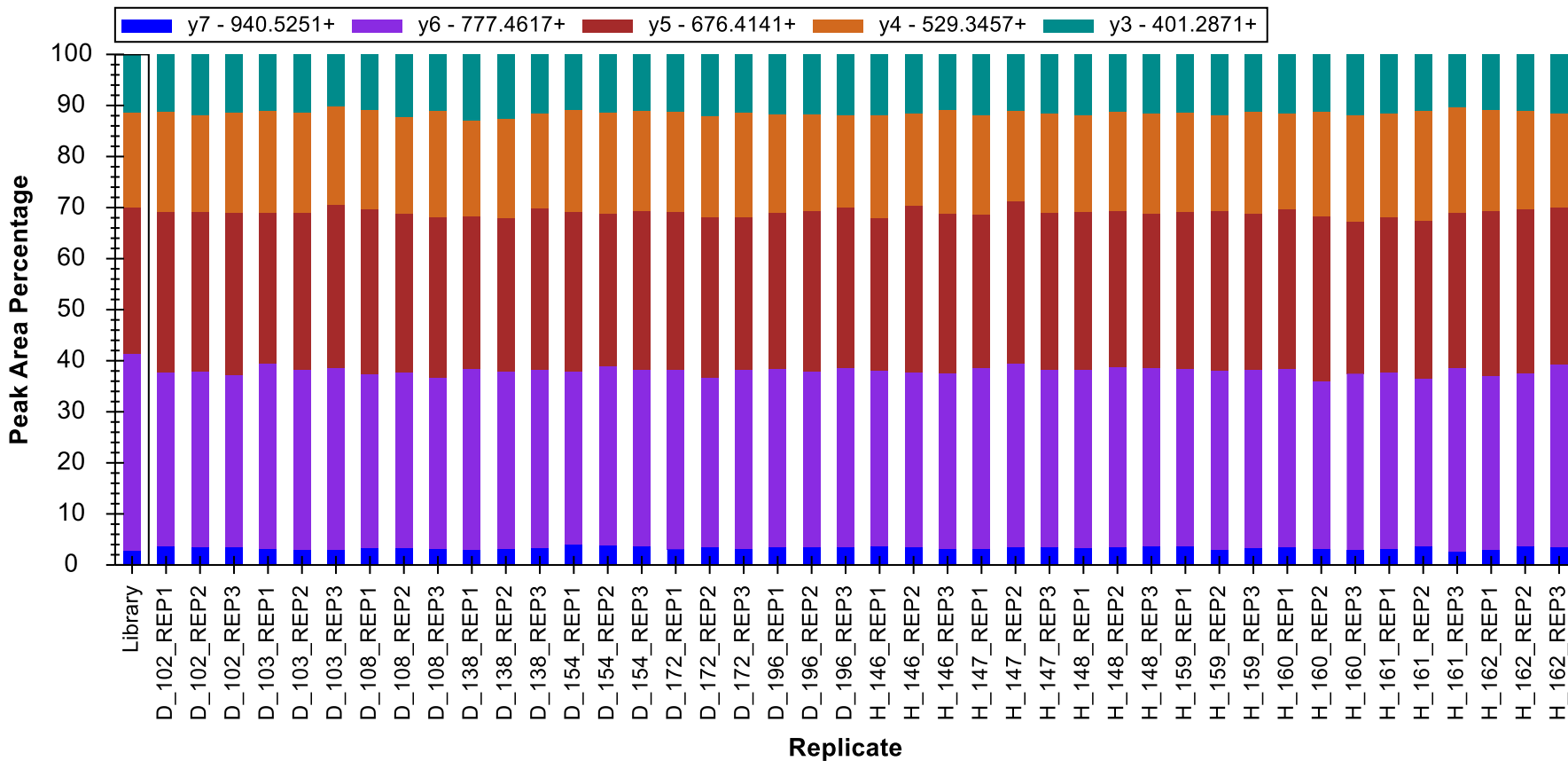


Prior Knowledge and Consistency

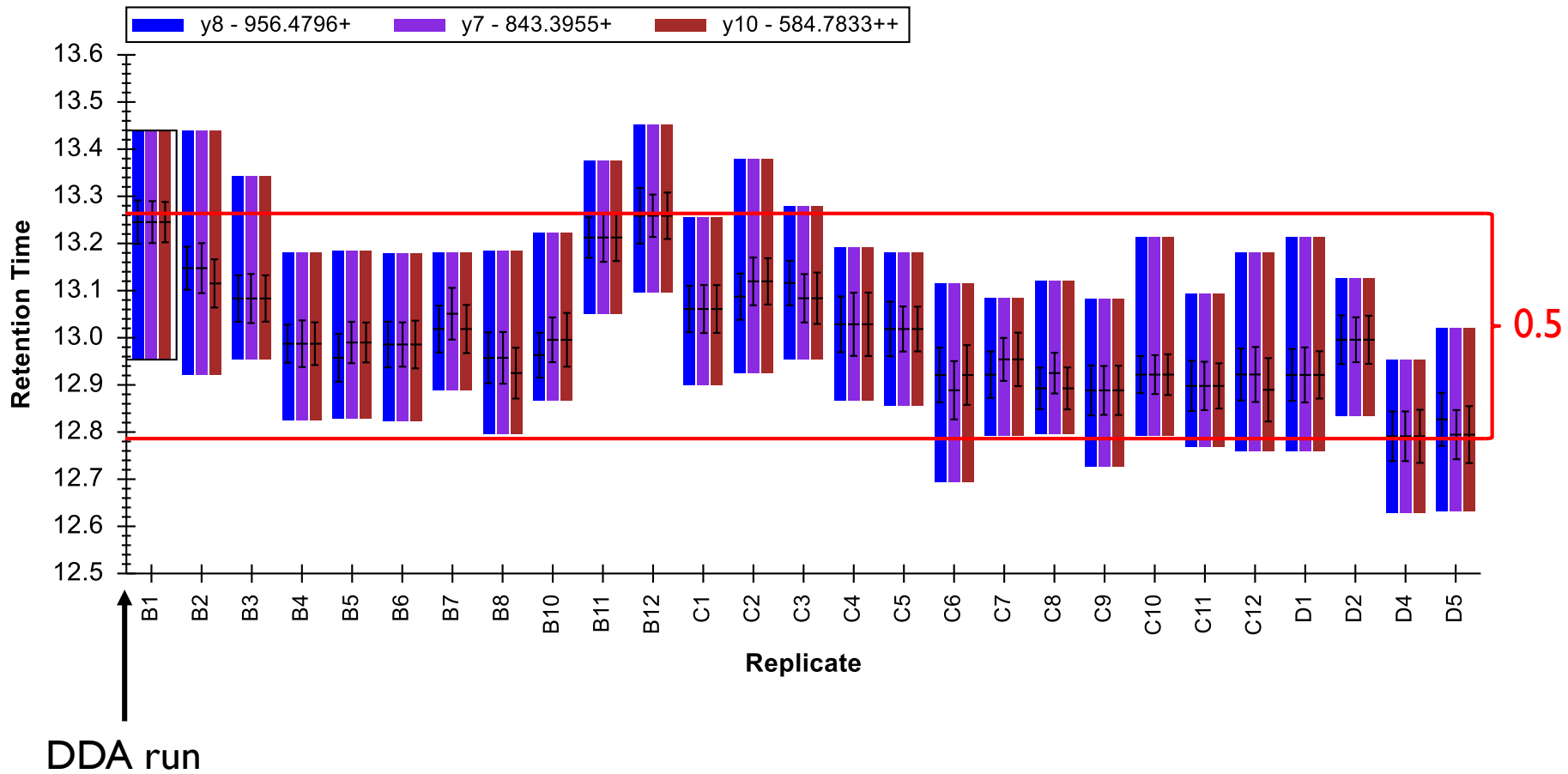
- ▶ **Relative product ion abundance**
 - ▶ Spectral libraries
- ▶ **Retention time**
 - ▶ iRT libraries
- ▶ **Powerful enough to be used cross-lab / cross experiment**
 - ▶ Measure, store, re-use
- ▶ **More powerful run-to-run**



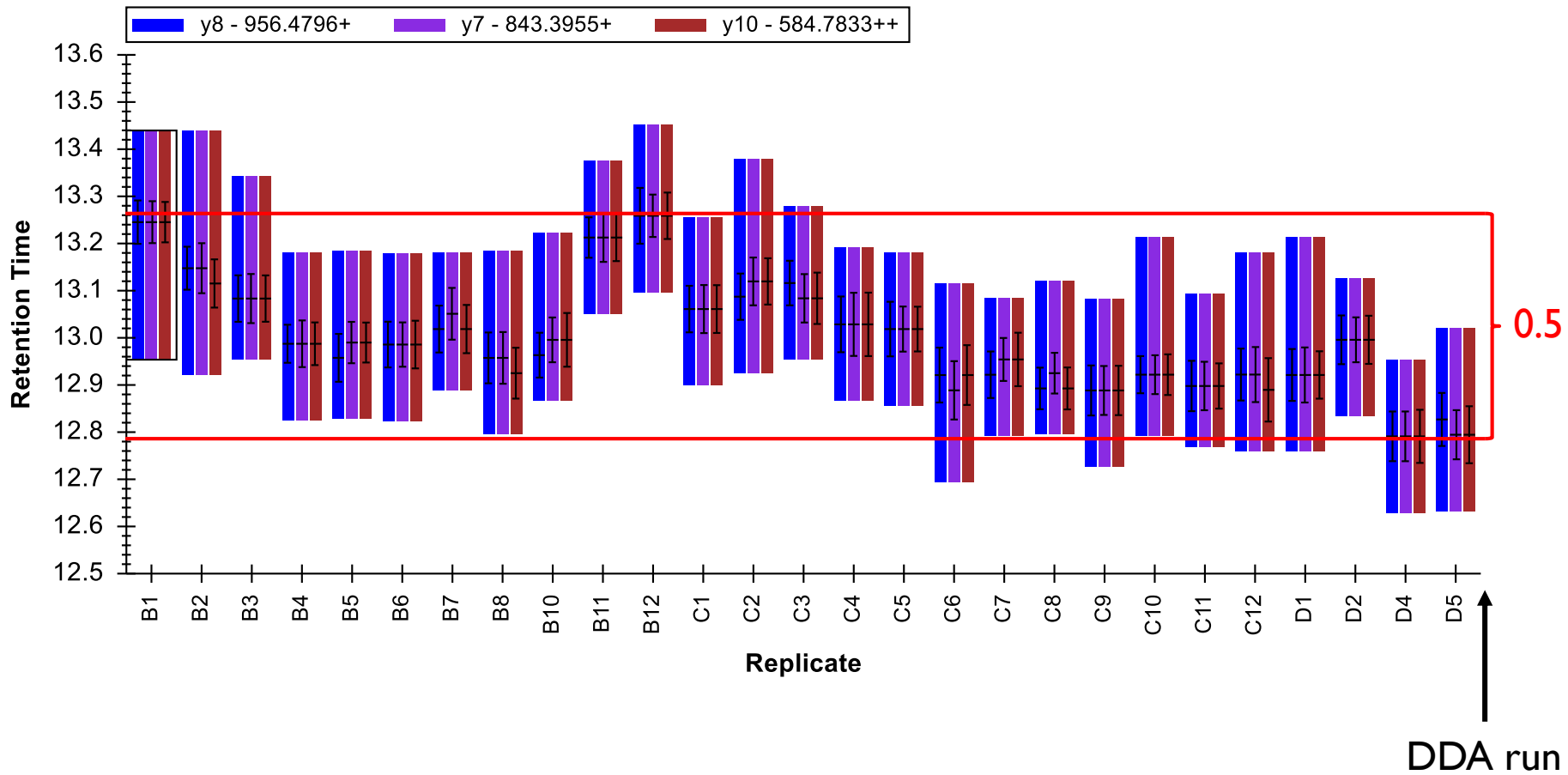
Relative Product Ion Abundance



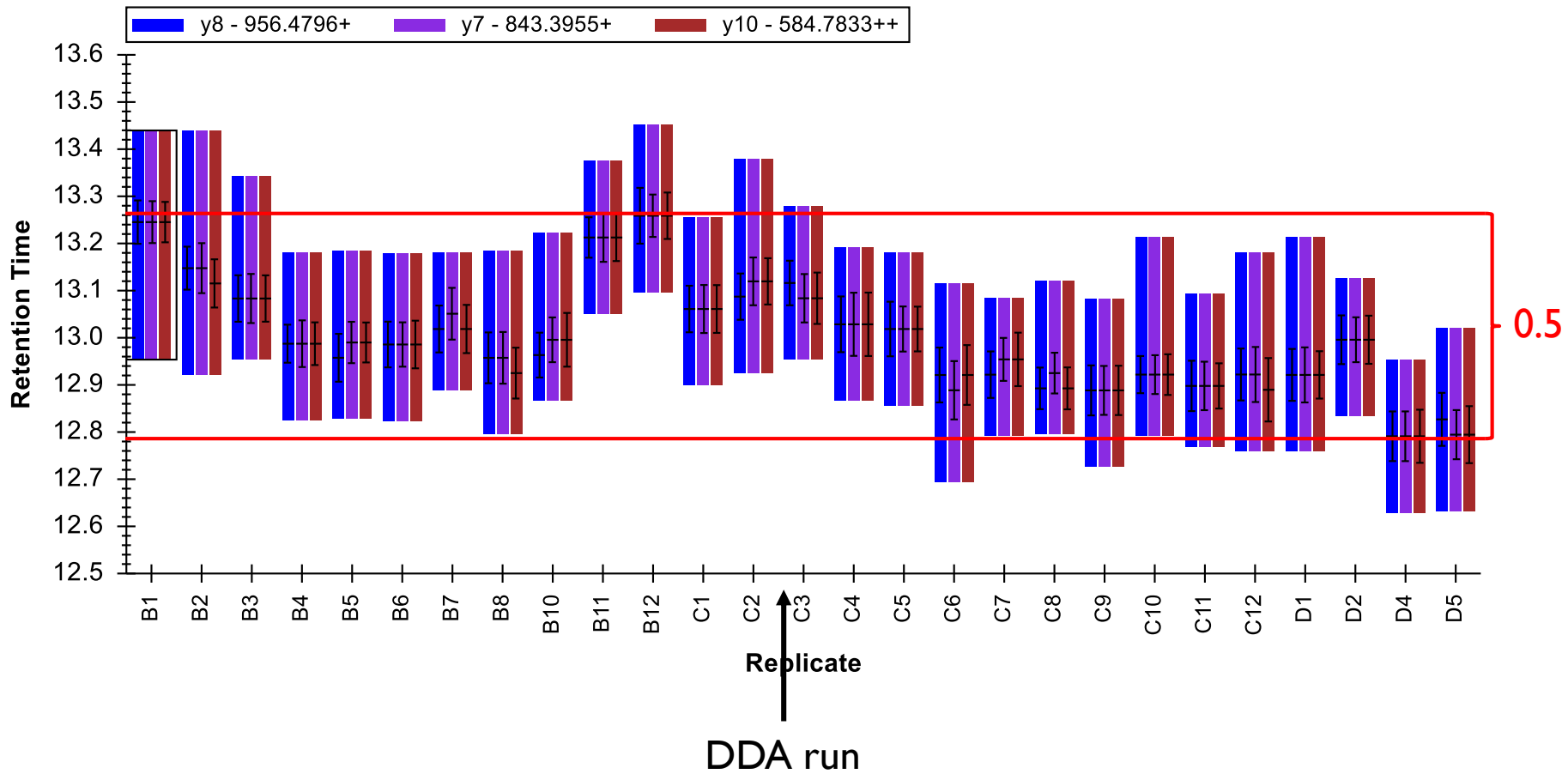
Retention Time



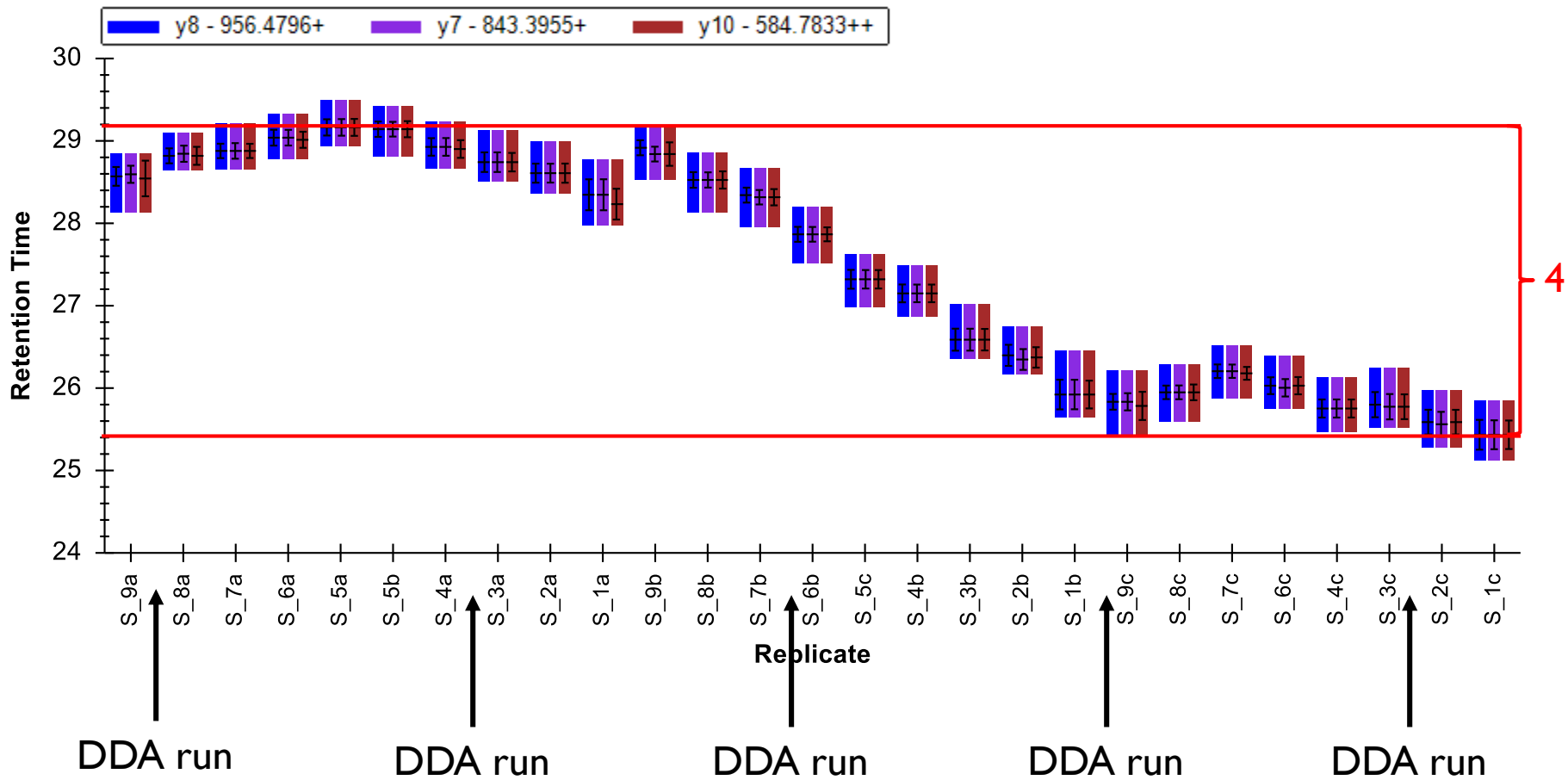
Retention Time



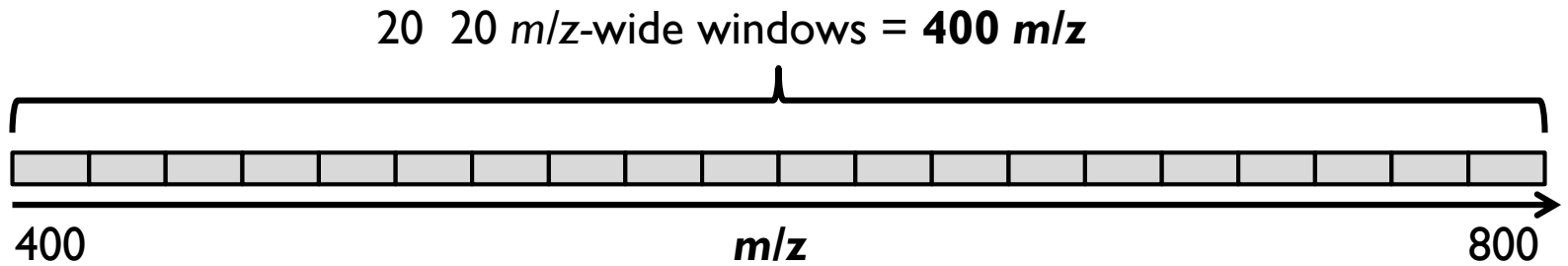
Retention Time



Retention Time

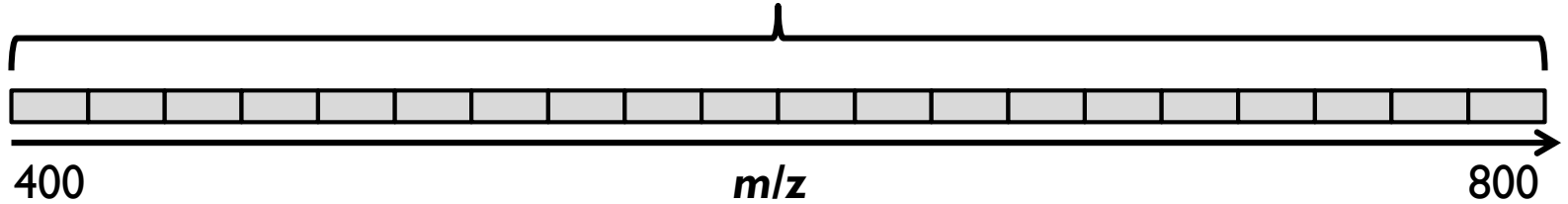


Data Independent Acquisition (DIA)



Data Independent Acquisition (DIA)

20 20 m/z -wide windows = **400 m/z**

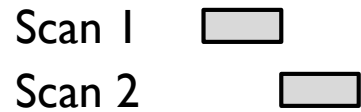
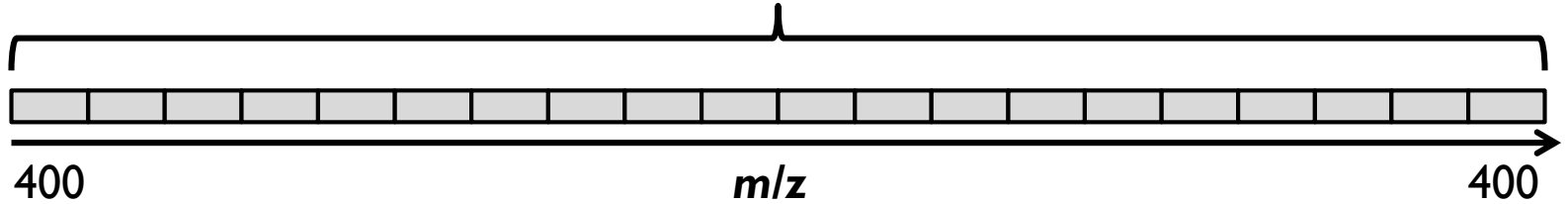


Scan I 



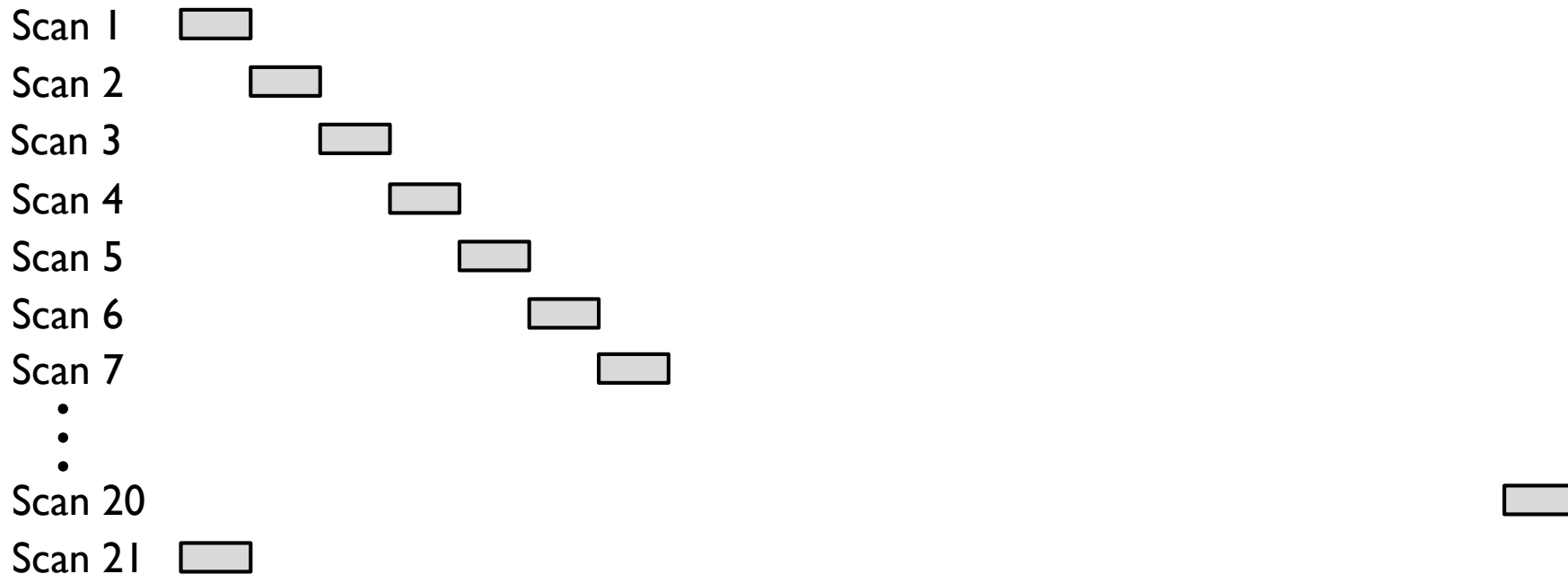
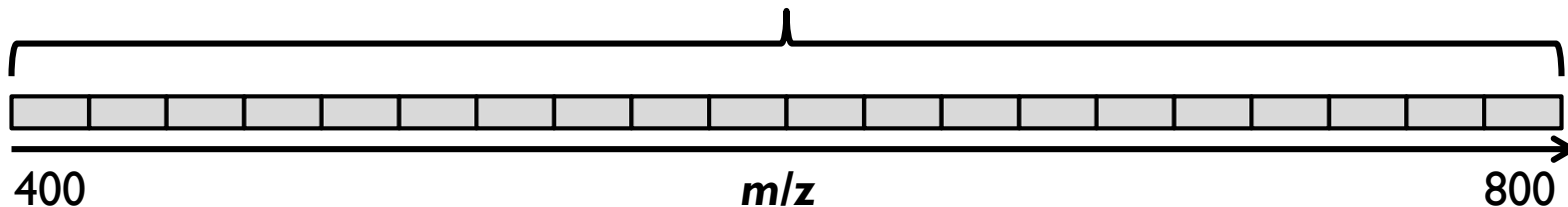
Data Independent Acquisition (DIA)

20 $20\ m/z$ -wide windows = **400 m/z**

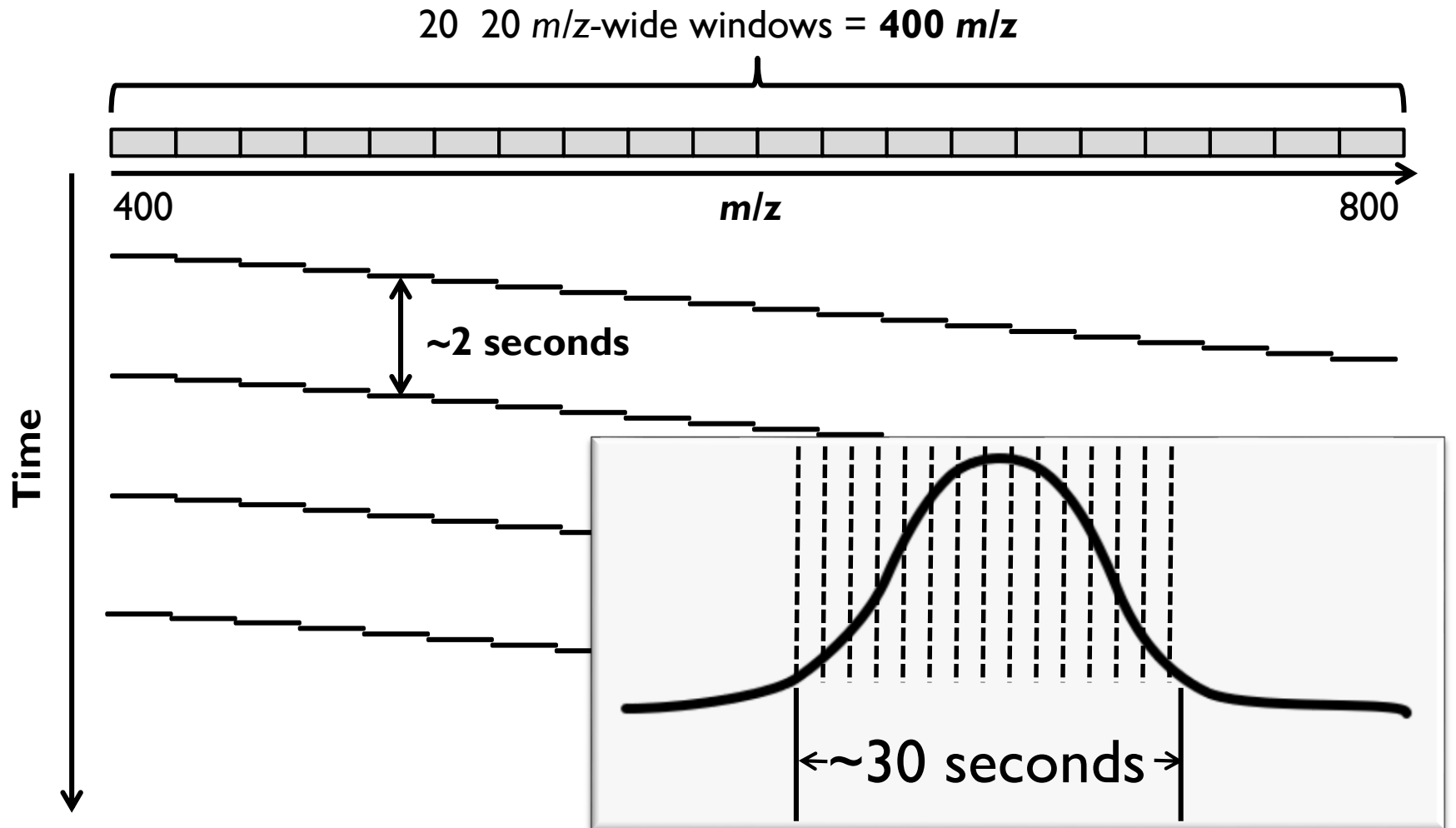


Data Independent Acquisition (DIA)

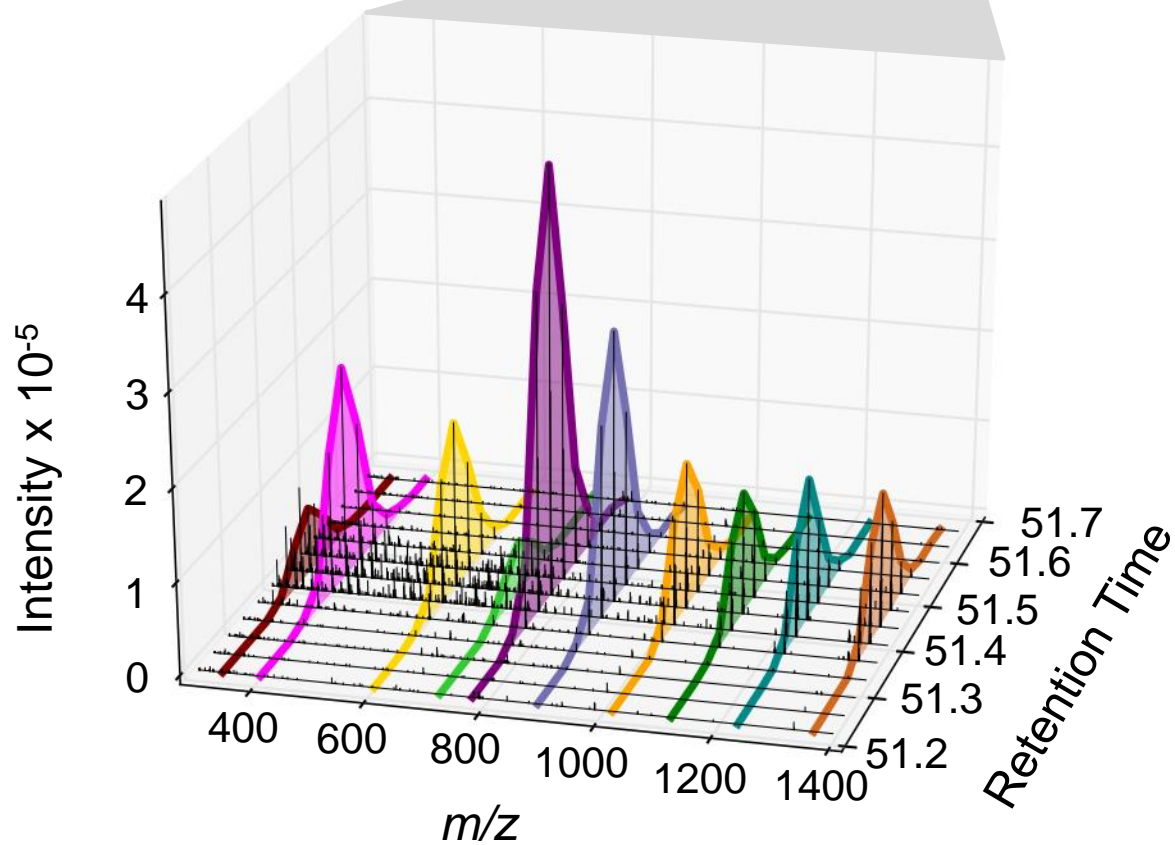
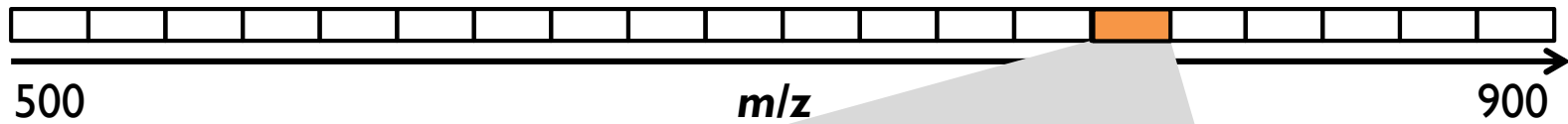
20 $20\ m/z$ -wide windows = **400 m/z**



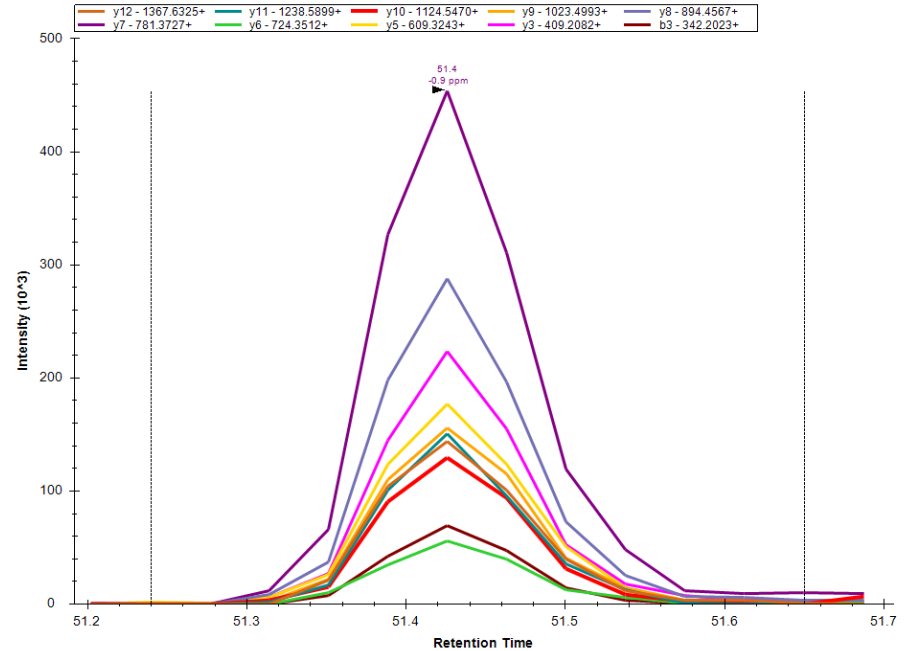
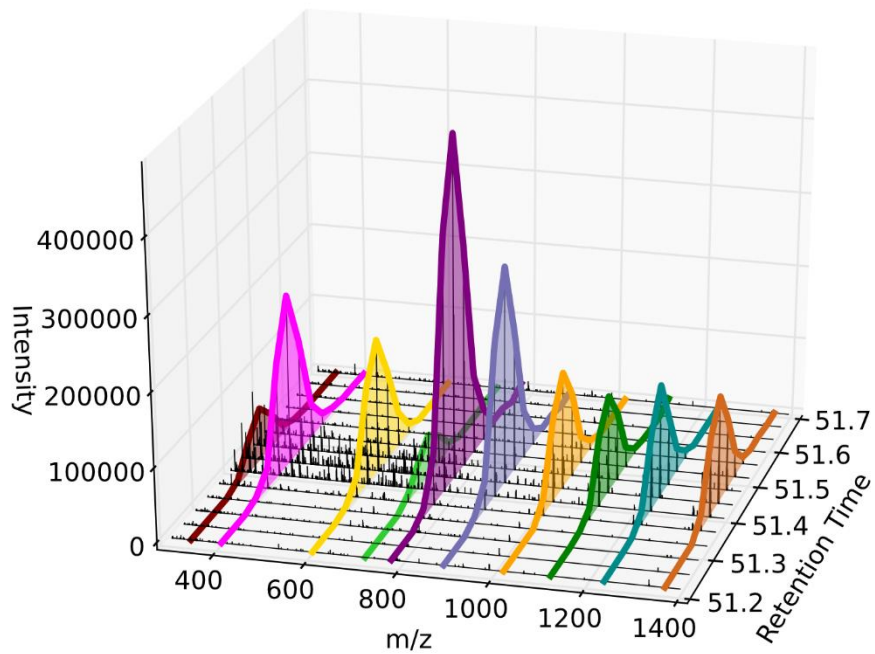
Data Independent Acquisition (DIA)



Extraction of Fragment Ions

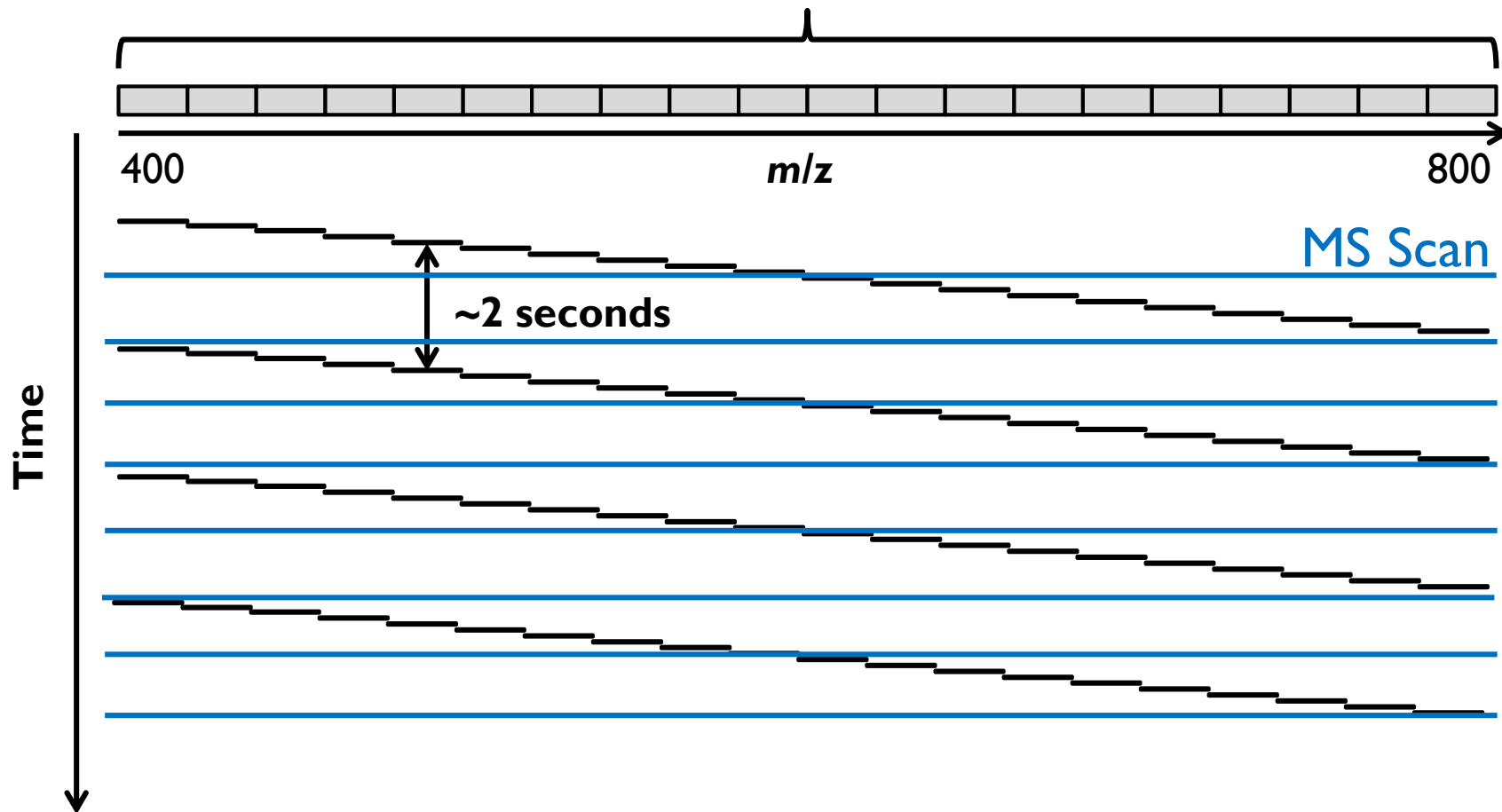


Extraction of Fragment Ions

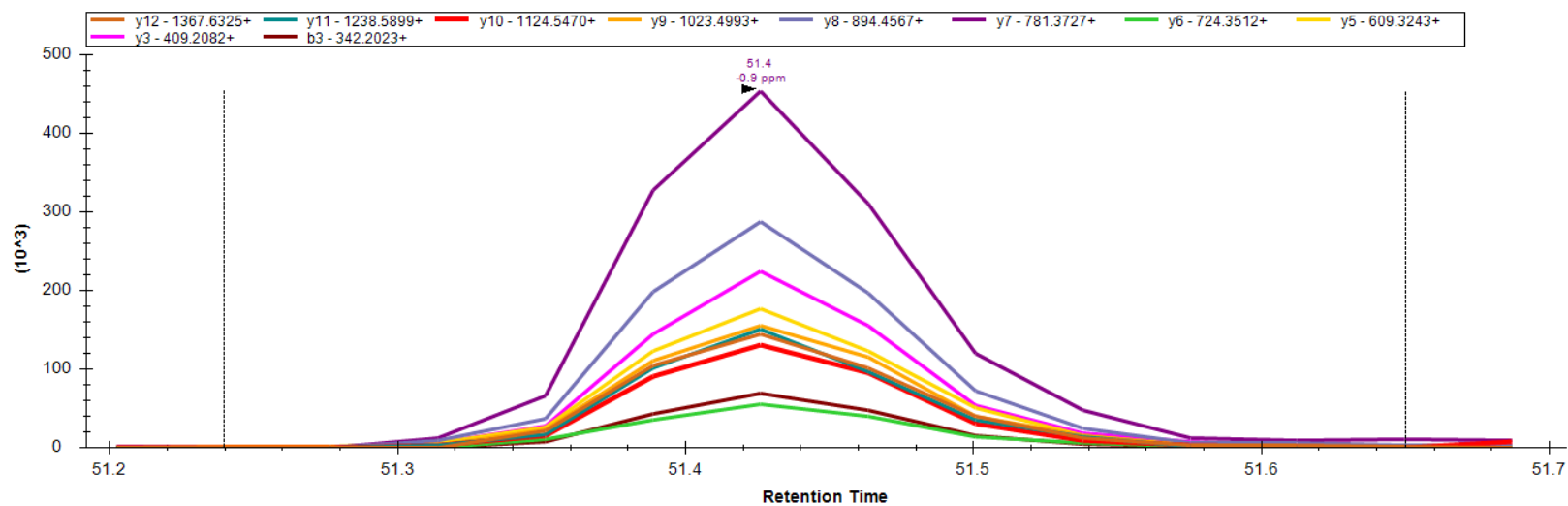
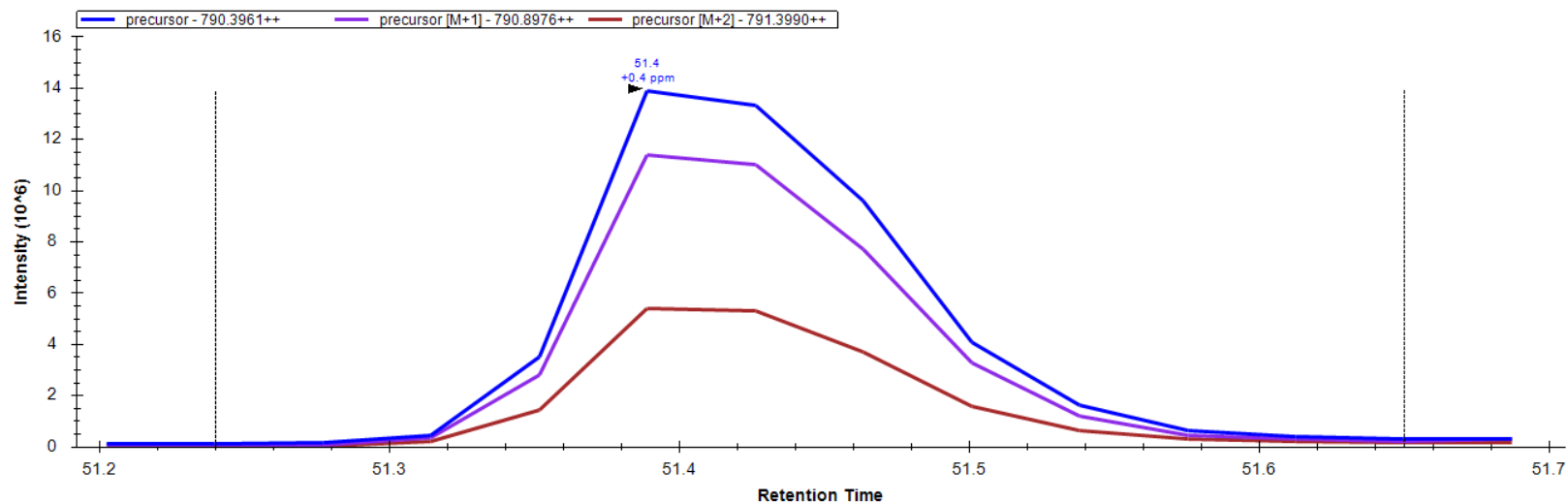


Measuring Precursor Ions

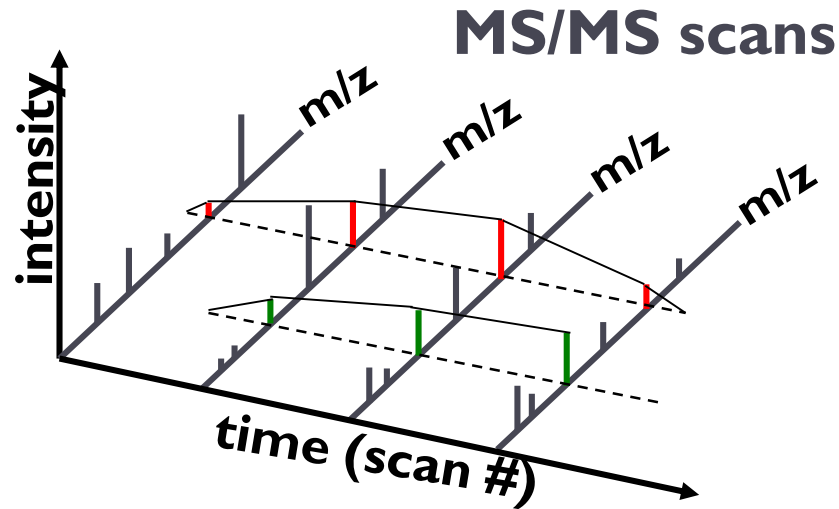
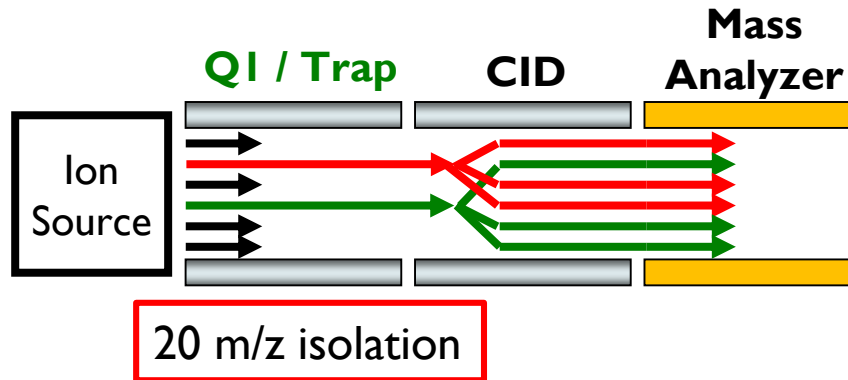
20 20 m/z -wide windows = 400 m/z



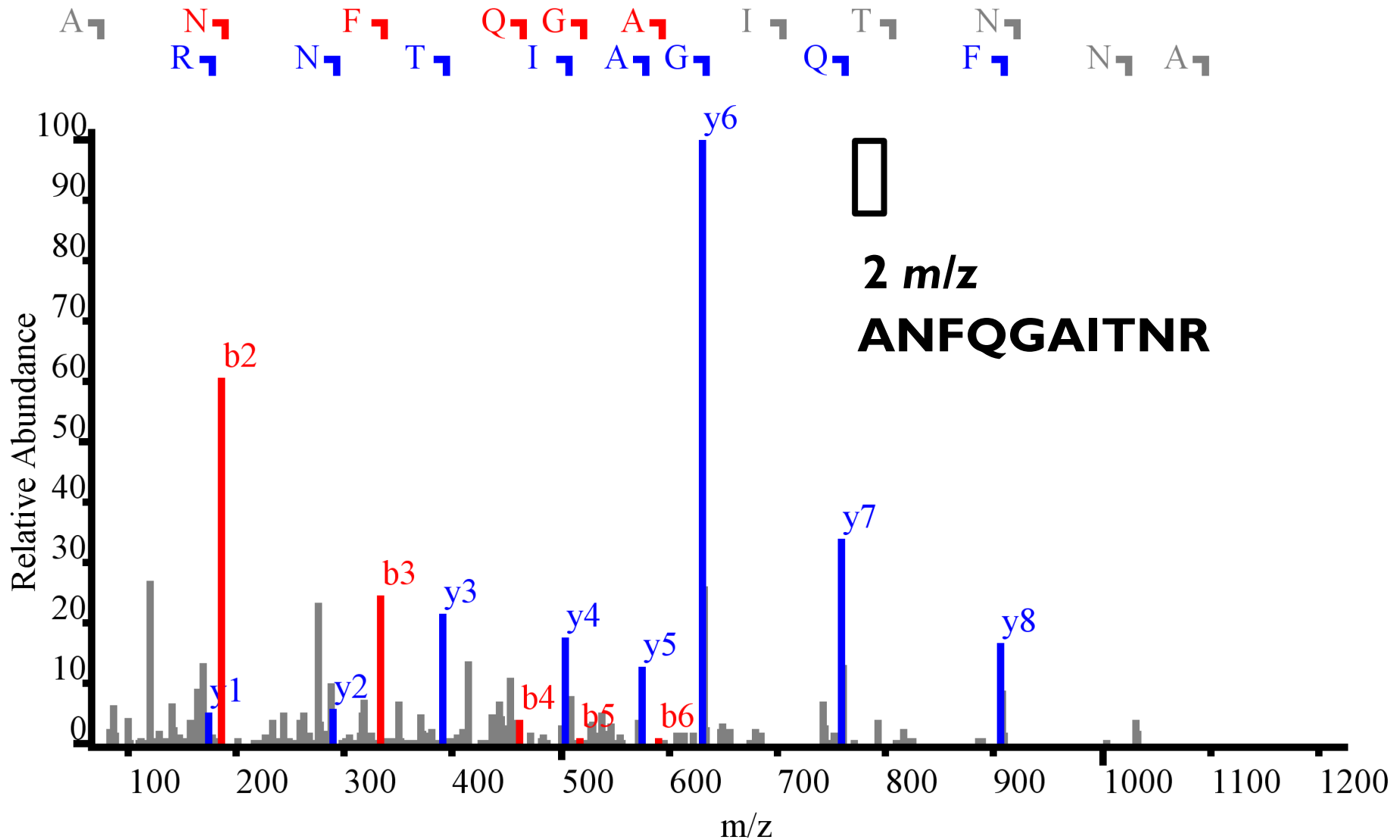
Precursor and Product Ion Information



DIA Chromatogram Extraction

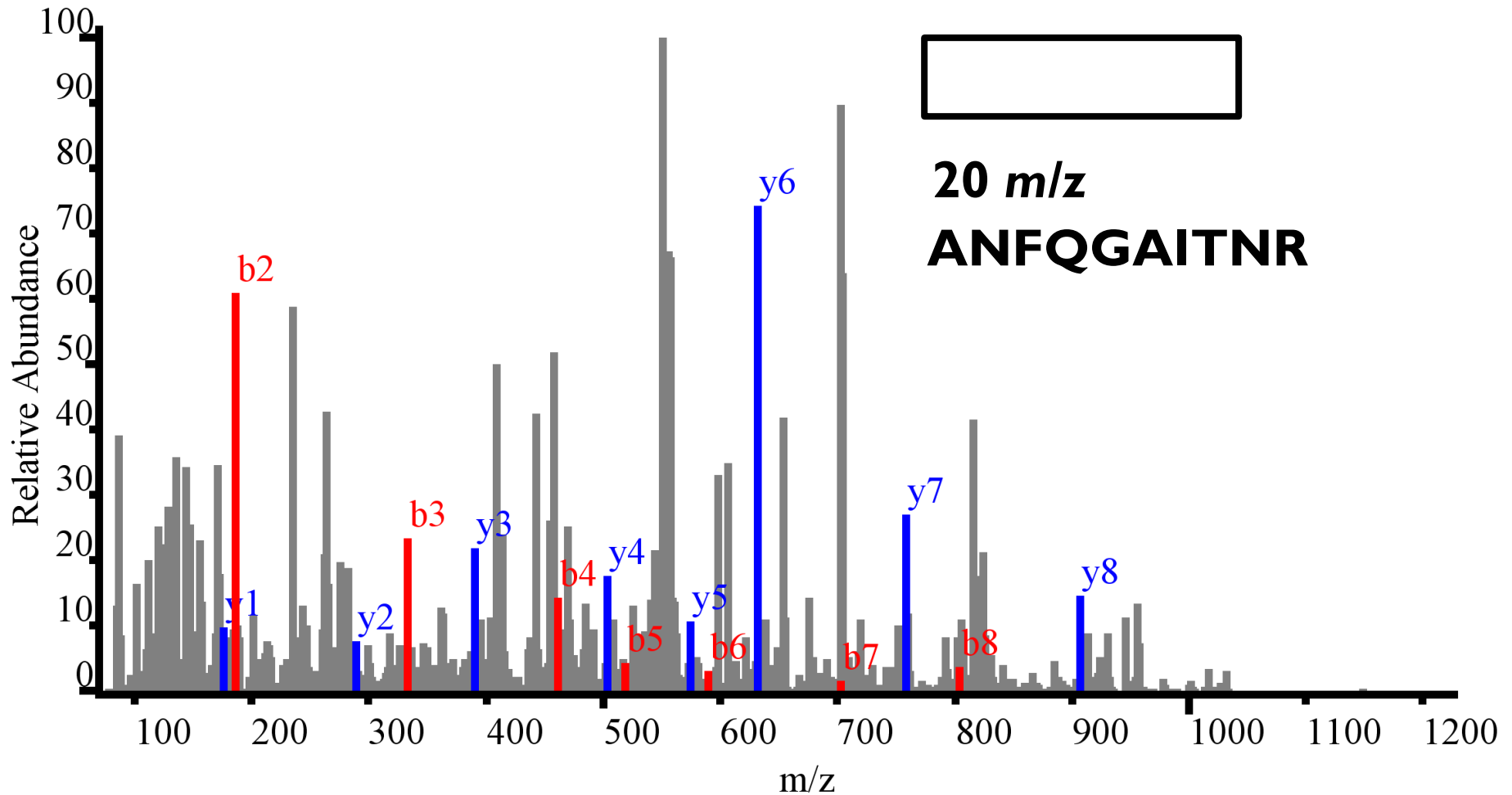


Product Ion Selectivity

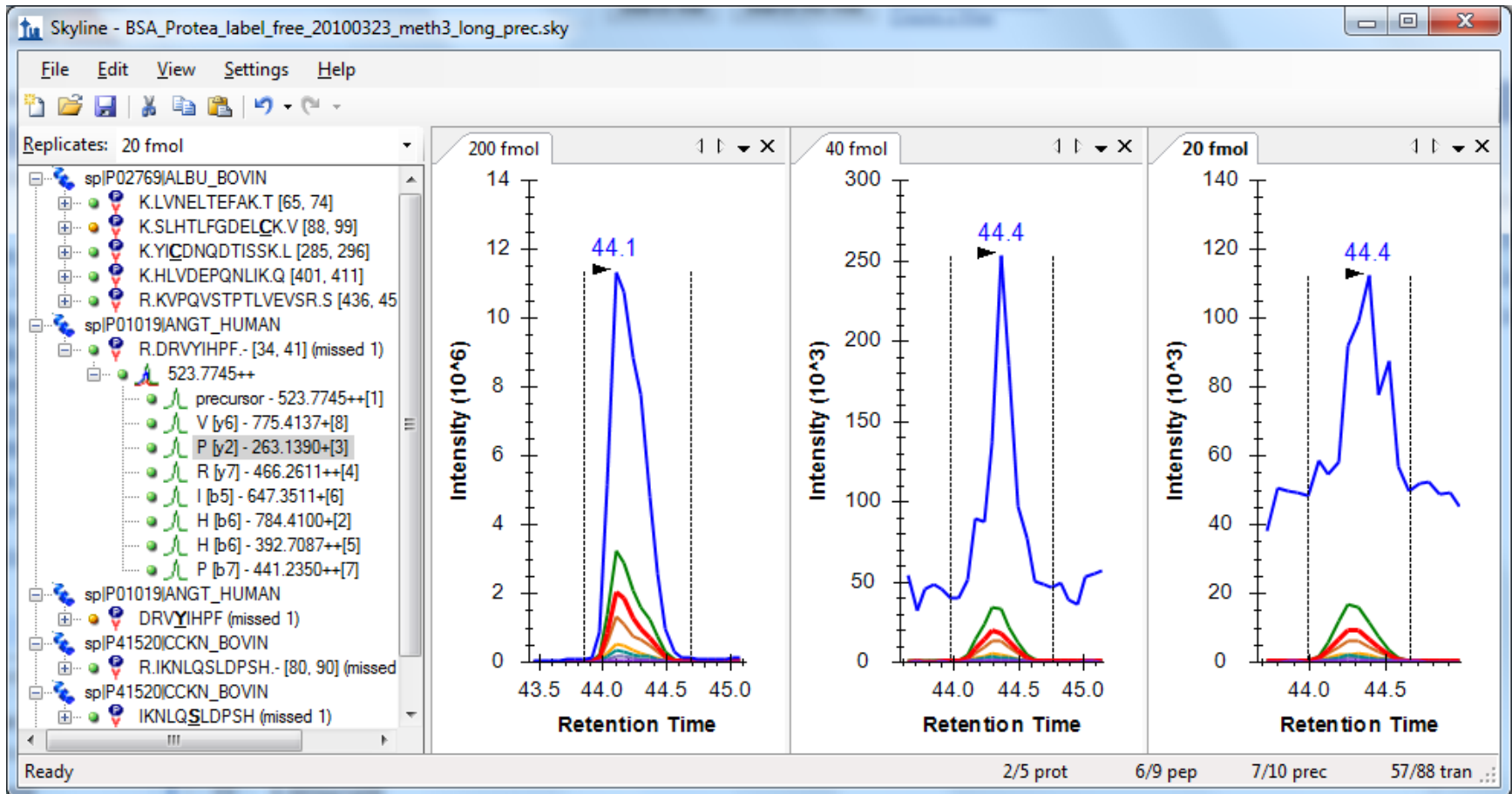


Product Ion Selectivity (DIA)

N₁ R₁ N₂ F₁ T₁ Q₁ G₁ A₁ I₁ T₁ N₂
R₁ N₂ T₁ I₁ A₁ G₁ Q₁ F₁ N₂ A₁



When Selectivity Becomes Sensitivity



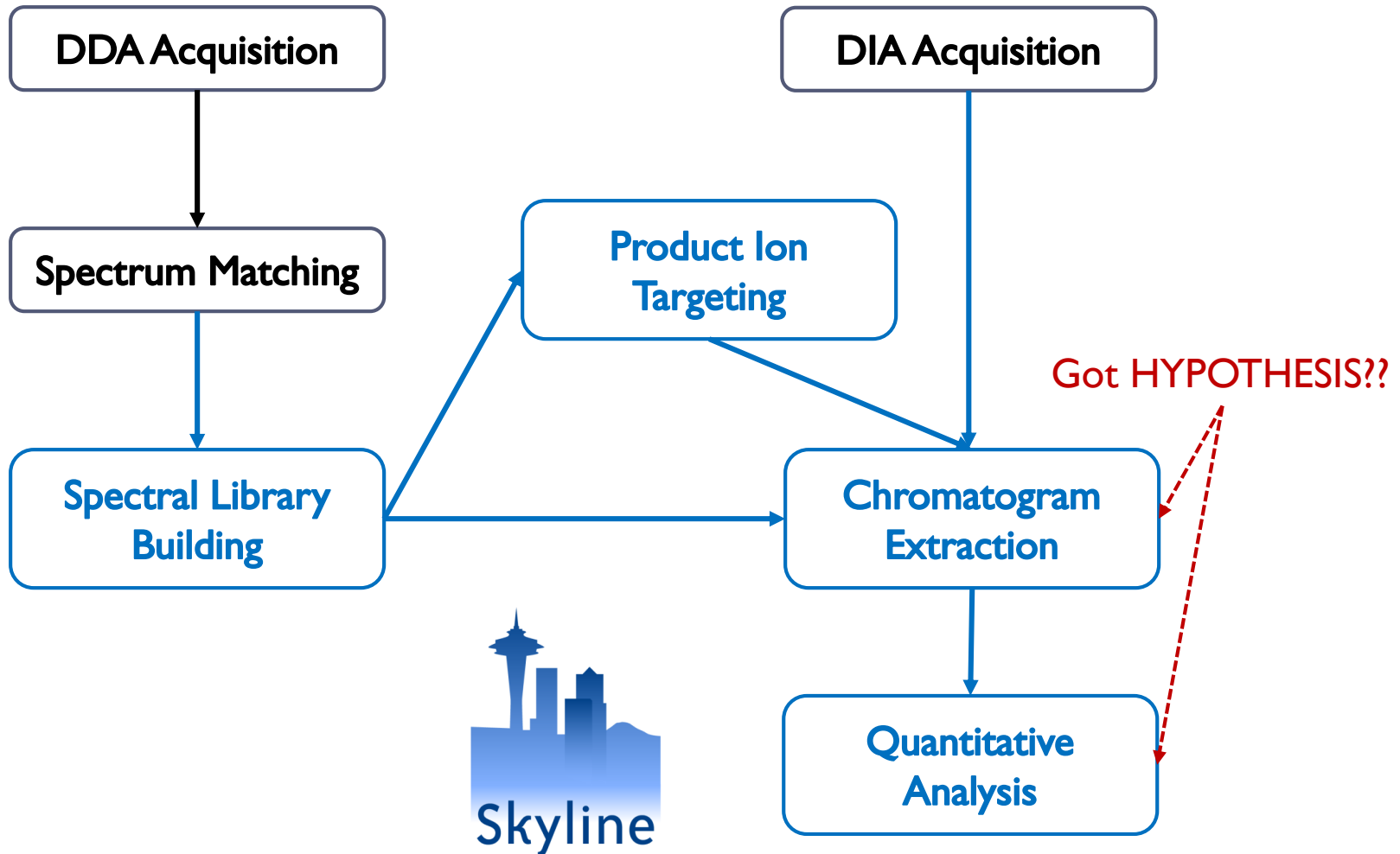
Decreasing noise increases signal-to-noise

DIA Trade-Offs

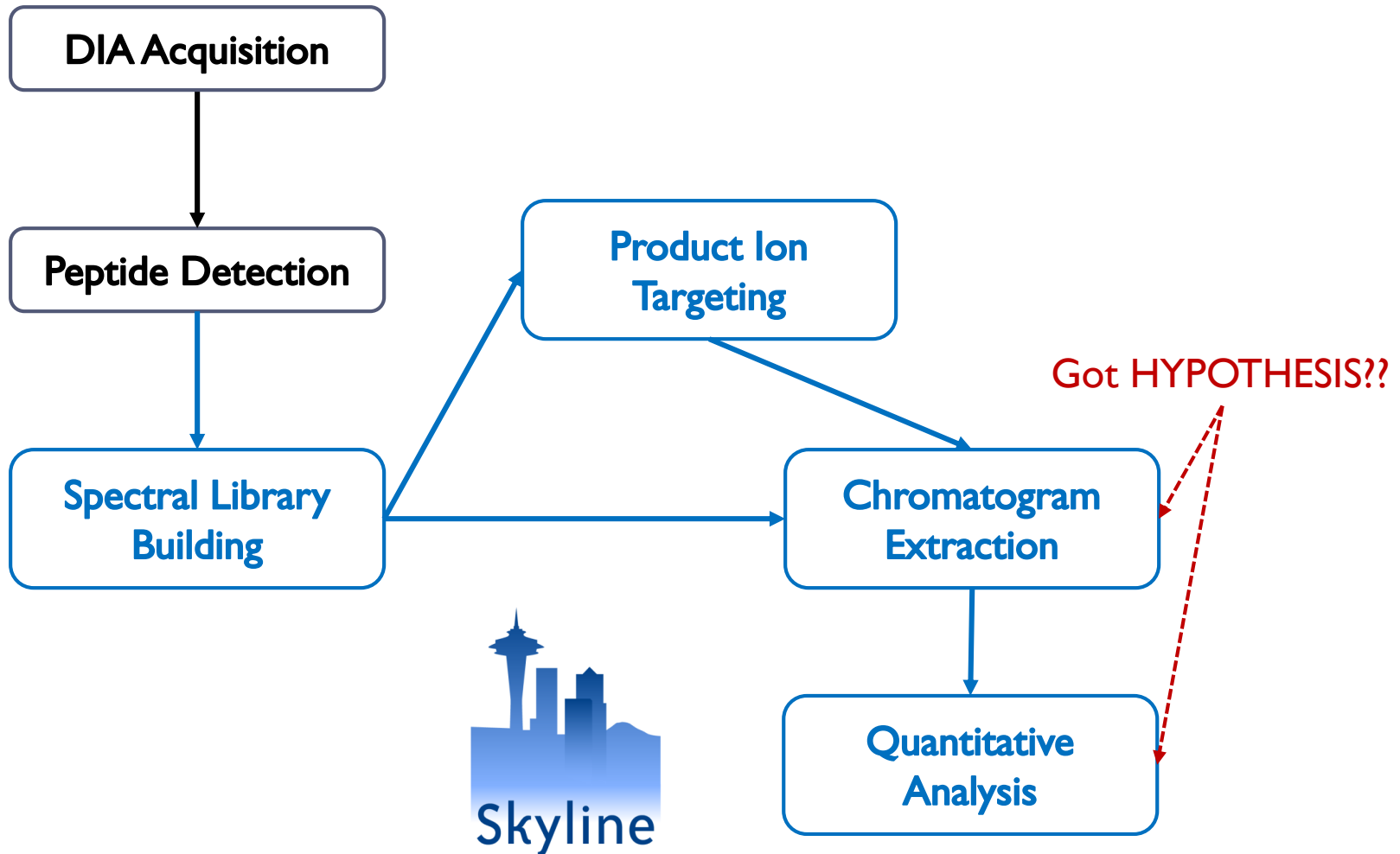
- ▶ Selectivity
 - ▶ Cycle time
 - ▶ Measured range
-
- ▶ All ion digital record – image quality?



Overview



DIA-Centric Workflow



DIA-Centric Workflow

DIA Acquisition

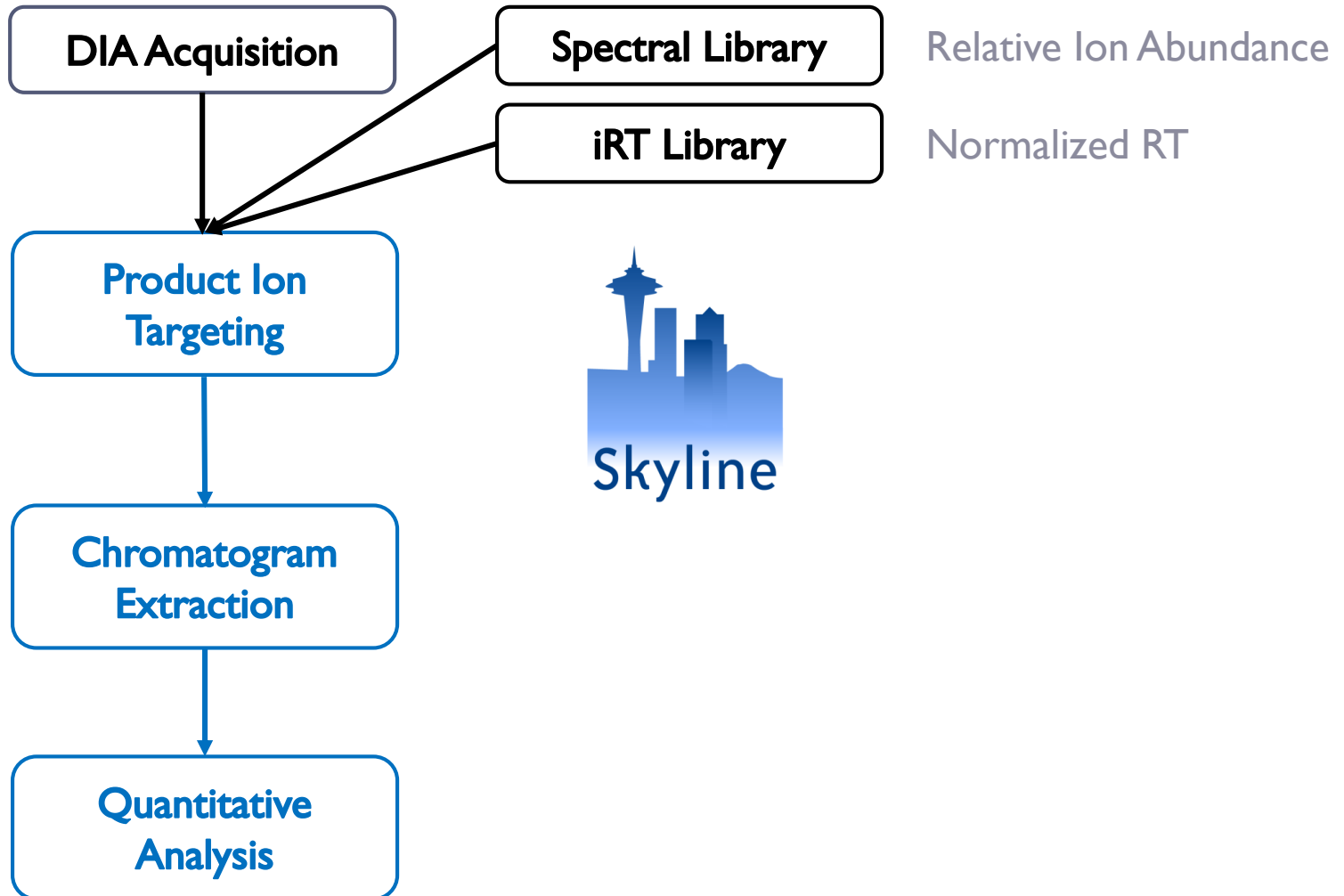


Peptide Detection

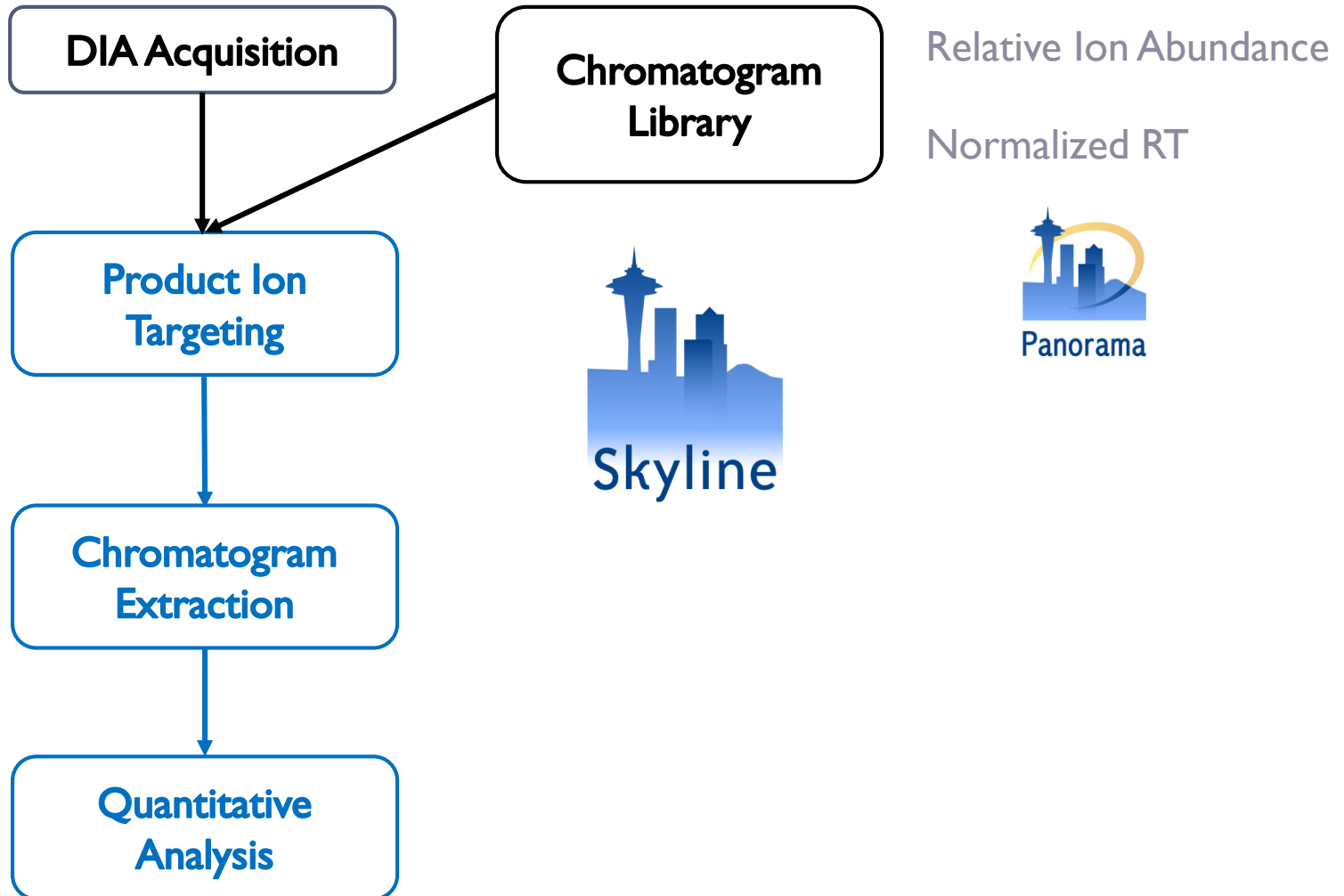
- ▶ Pecan - MacCoss
- ▶ MS Pathfinder - Smith
- ▶ Umpire - Nesvizhskii
- ▶ Bandeira



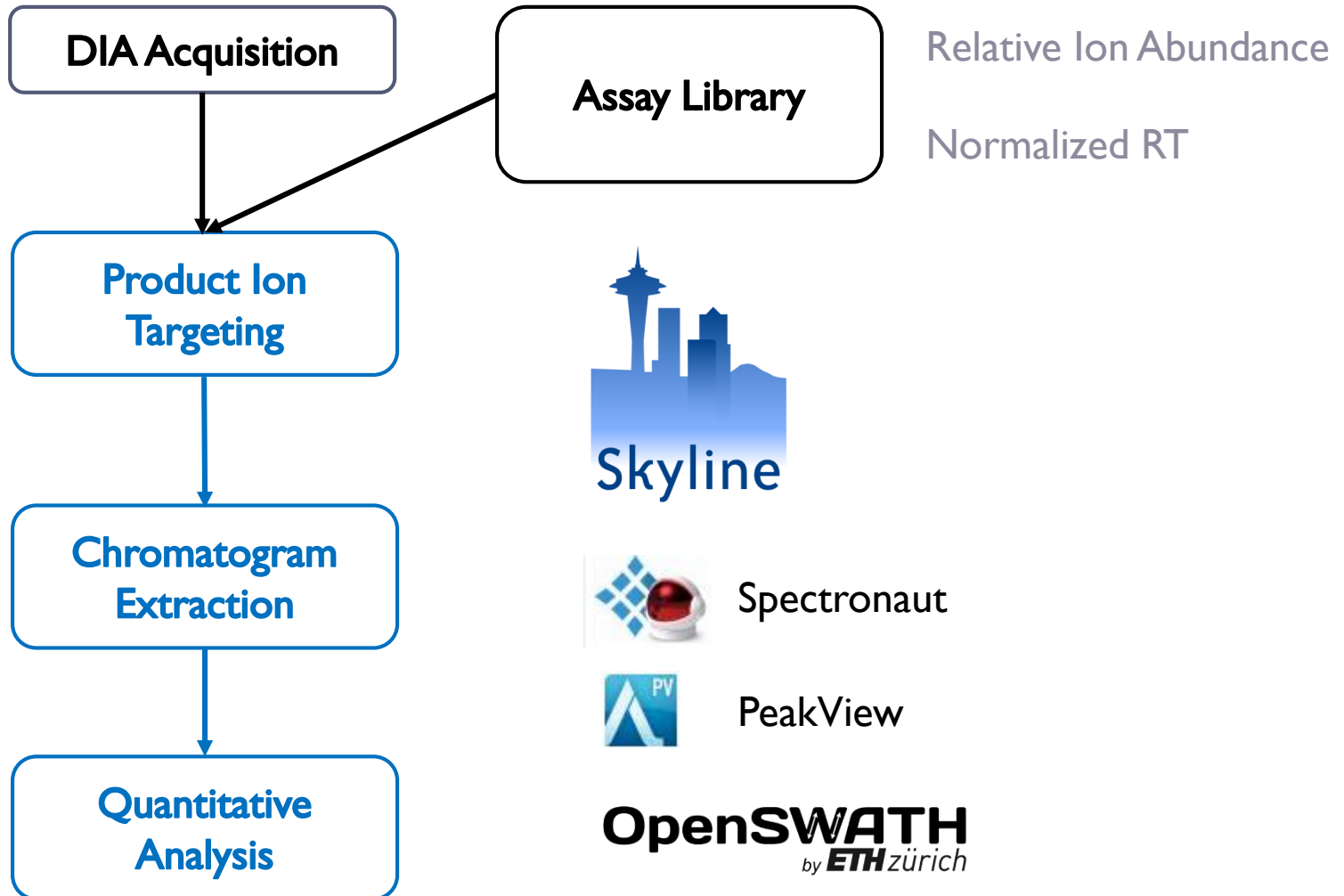
Prior Knowledge Workflow



Prior Knowledge Workflow



Prior Knowledge Workflow



Tutorial

- ▶ DIA using interspersed DDA



Learn More

- ▶ Webinar #3: Tuesday, Jan. 13th – PRM
- ▶ Weeklong Targeted Proteomics Course at UW
 - ▶ March 23-27 (apply by Nov. 21)
- ▶ Workshops at US HUPO and ASMS
- ▶ Weeklong Course at ETH, Zurich
 - ▶ June 22-26
- ▶ Weeklong Course at PRBB, Barcelona
 - ▶ November 15-20
- ▶ Weeklong Course in Boston
 - ▶ TBA



Questions?

- ▶ Ask any questions you have on the topic of using DDA data in Skyline.

<http://tinyurl.com/QA4Skyline>

- ▶ Take the post-webinar survey:

<http://tinyurl.com/Survey4Webinar>

